
VRiSim

Flight Panel
Application
Software

VRInsight, ©2011

Contents:

- 1. Introduction**
- 2. VRiSim Installation**
- 3. FSUIPC Installation**
- 4. Connecting VRInsight's Flight Panel/Re-Install Driver Software**
- 5. Running VRiSim software**
- 6. "Panel Installer"**

1. Introduction

VRiSim is application software managing VRInsight's flight simulation hardware panels. VRiSim can be used in replacement of SerialFP2. Multiple hardware panels can be used with single instance of VRiSim.

To reduce distributing file size, software installer is supplied as divided package; base-package and device specific module package. The base-package installs only VRiSim and Panel Installer utility.

VRiSim is applicable for Microsoft's Flight Simulator.

2. VRiSim Installation

Installer executable is divided into base package and device specific modules. VRiSim is included in the base-package setup installer, "Install_VRiSim.exe".

The base-package installer can be found in the supplied DVD,

\\VRiSim\\Install_VRiSim.exe

Or downloaded at VRInsight's web-page, <http://www.vrinsight.com>

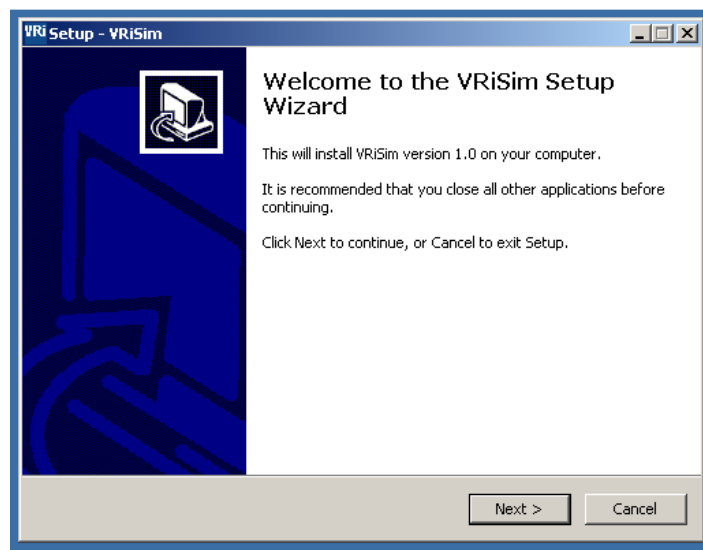
Step 1. Run Base-Package Installer

Run base-package installer "Install_VRiSim.exe" by double clicking.



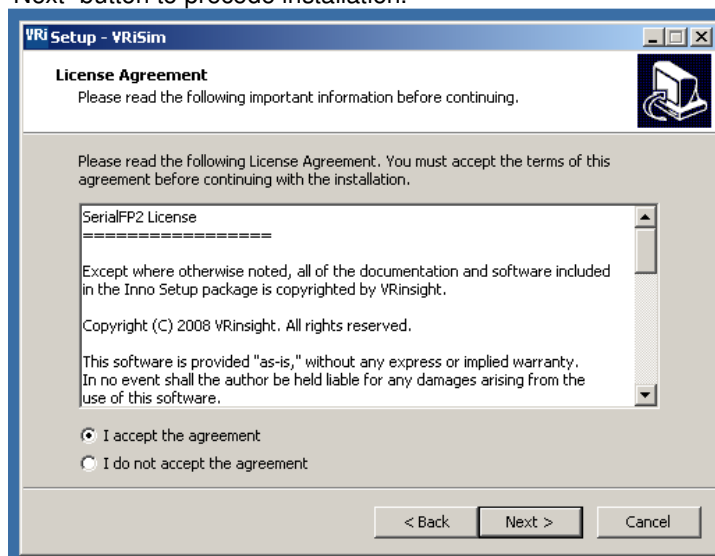
Install_VRiSim.exe

Press Next button on VRiSim setup wizard window



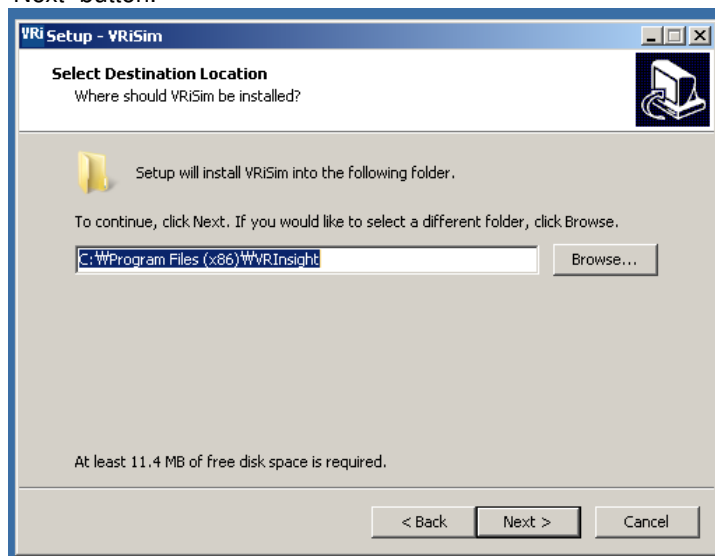
Step 2. License Agreement

Read License Agreement and check "Accept agreement" radio button. Then press "Next" button to precede installation.



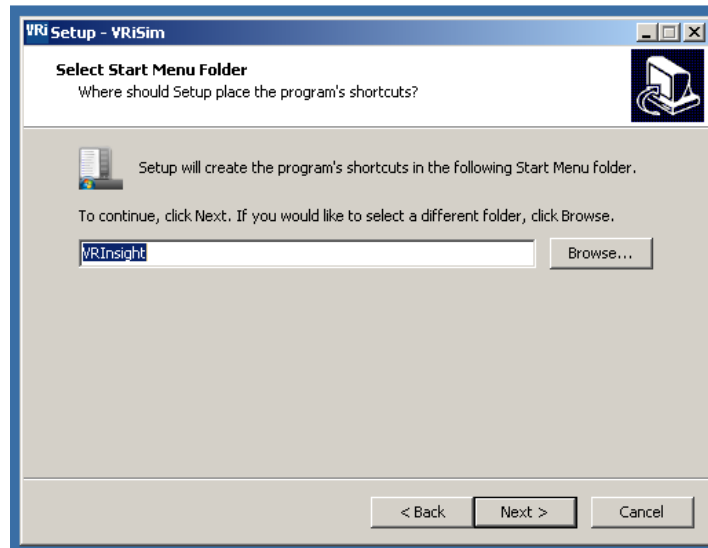
Step 3. Select Destination Location

Keeping default destination location of installed folder is highly recommended. Press "Next" button.



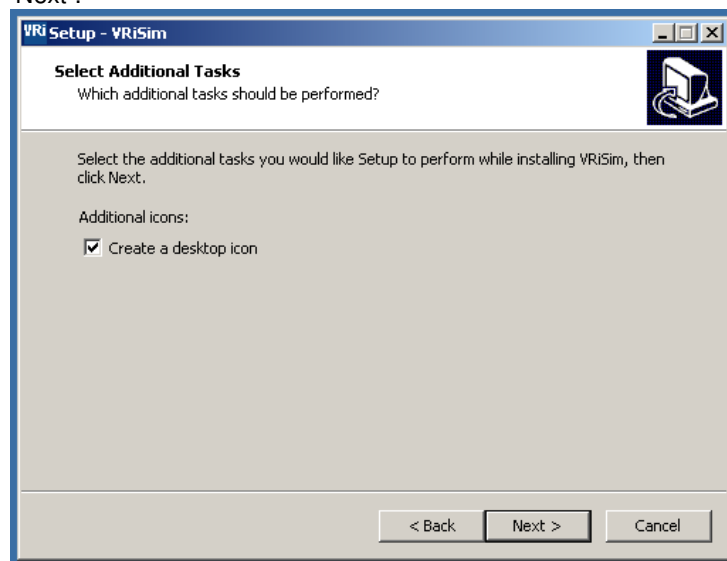
Step 4. Select Menu Folder

Select Menu folder name as default "VRInsight" and press "Next" button.



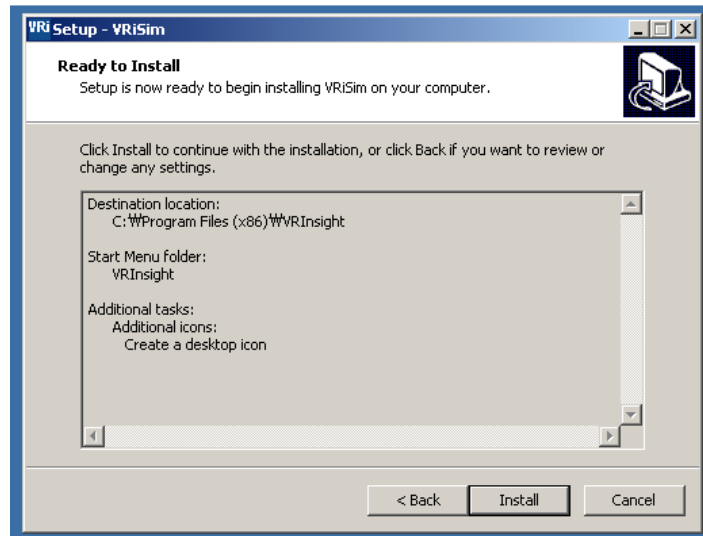
Step 5. Create a desk-top icon

Check "Create a desk-top icon". VRiSim icon will be created after installation. Press "Next".



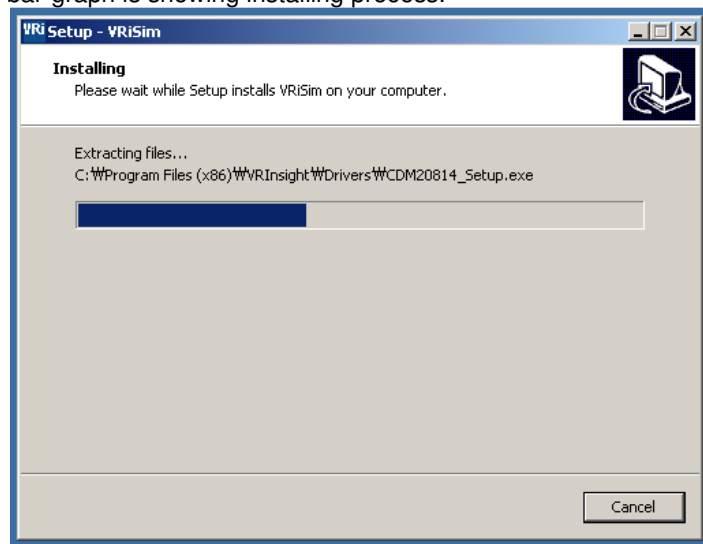
Step 6. Ready to install

Now ready to install VRiSim. Review installation setting and press "Next" button.



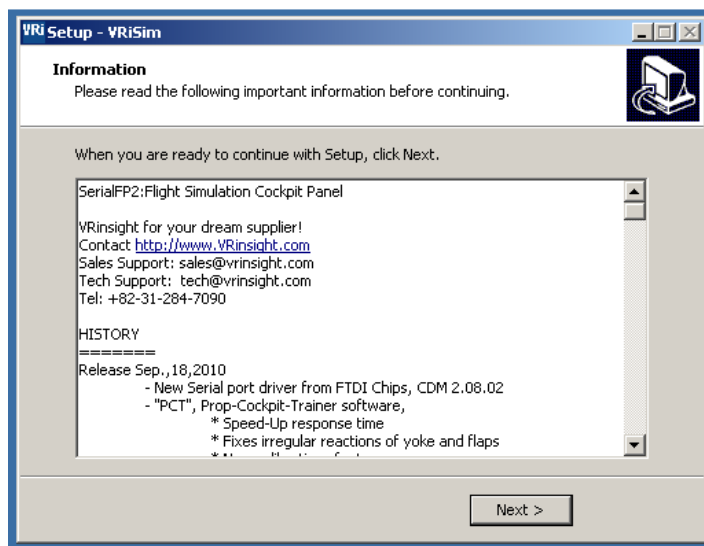
Step 7. Installing

Files are extracted and copied into destination folder during installing step. Animated bar-graph is showing installing process.



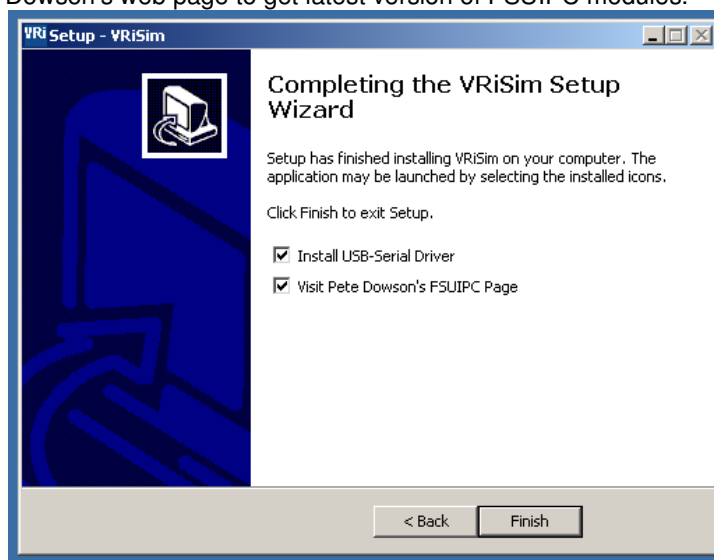
Step 8. Information

Read this information of sales and tech-support e-mail address, VRinsight's website. Press "Next" button.



Step 9. Install USB-Serial Driver

VRInsight's flight panel is connected to PC's USB port and communicated via serial port. By check "Install USB-Serial Driver", the driver software will be installed automatically at the finishing phase of installation procedure. The USB-Serial Driver can be installed separately to the VRiSim installation. Optionally, visit Pete Dowson's web page to get latest version of FSUIPC modules.



NOTE: Install device specific module

The base-package installer only installs basic utilities; "VRiSim" and "Panel Installer". Additionally device specific module must be installed. These installers are found in the supplied DVD under the folde named "VRiSim". Or downloaded at VRInsight's web-page, <http://www.vrinsight.com>

3. FSUIPC Installation

FSUIPC is add-on module for Microsoft's FlightSimulator. VRInsight's hardware panel interacts with FlightSimulator via FSUIPC. VRiSim is bridging VRInsight's hardware panel and FlightSimulator via FSUIPC. Actually FSUIPC is pay-ware. VRiSim is working with unregistered version of FSUIPC under the API level usage agreement with Pete Dowson. You have the option to pay for additional features in FSUIPC.

Step 1. Getting latest FSUIPC

To download latest version of FSUIPC, visit Pete Dowson's web-page,

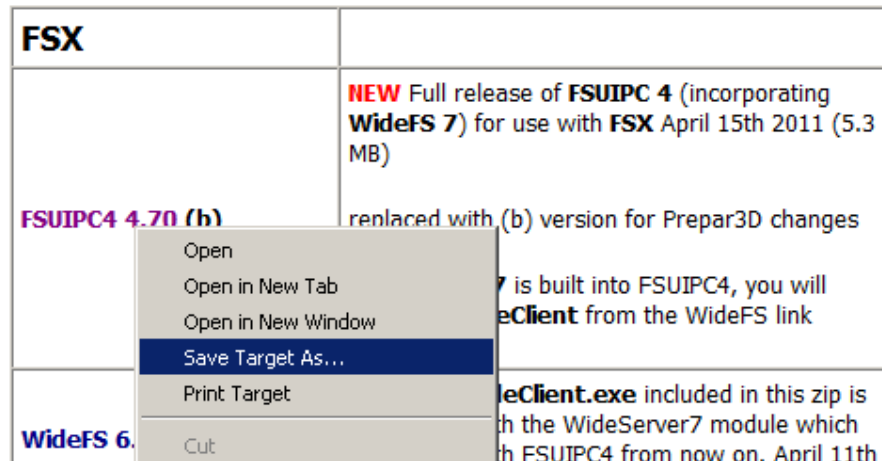
<http://www.schiratti.com/dowson.html>

Web browser will be directed to FSUIPC download page, if "Visit Pete Dowson's FSUIPC page" is checked.

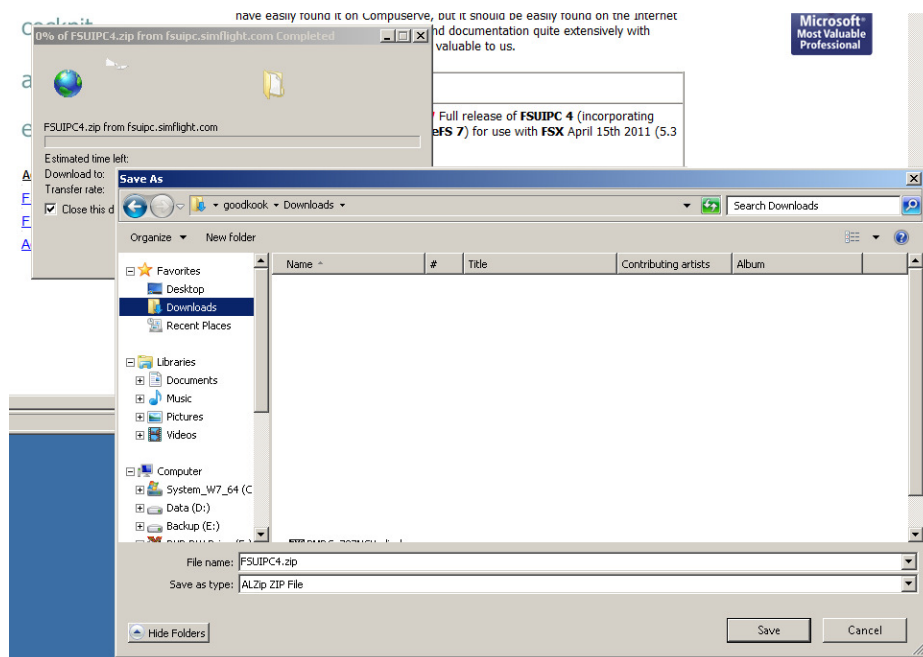


Step 2. Download FSUIPC

Click right-mouse button to FSUIPC4 download link and select "Save Target-As..."



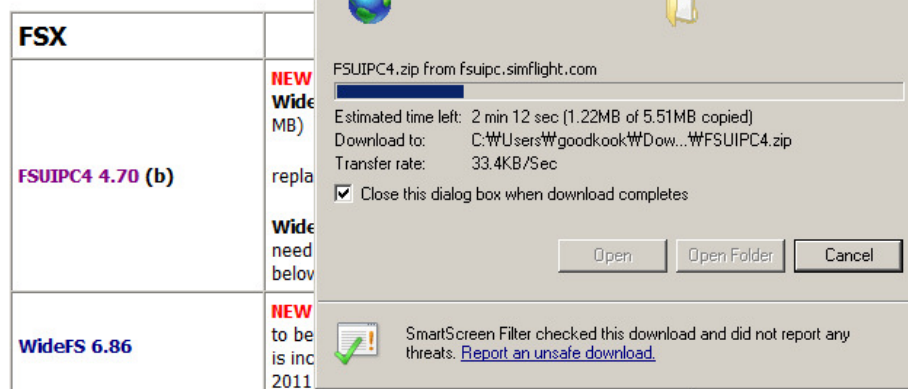
Specify a folder where the FSUIPC4.zip is saved (i.e. "Download"),



It'll take several minutes depending on internet connection.

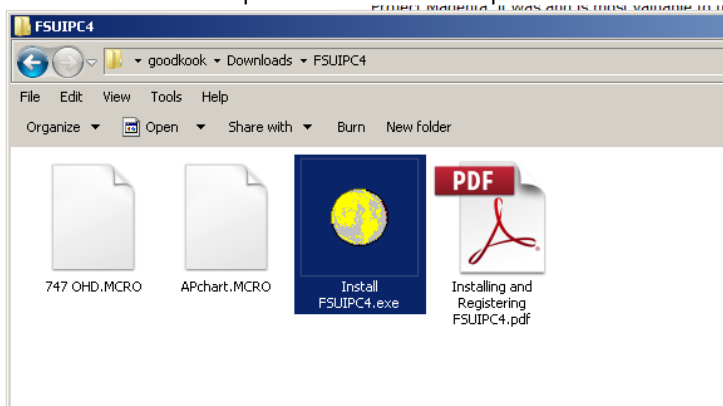
Peter Dowson's Support Forum [Please use this to contact Peter]

I had been searching for a link to Peter's WideFS following a request, and I had some trouble finding the newest postable version of his software. Ok, I could have easily found it on Compuserve, as well. We use Peter's programs at Project Magenta, it was and is most

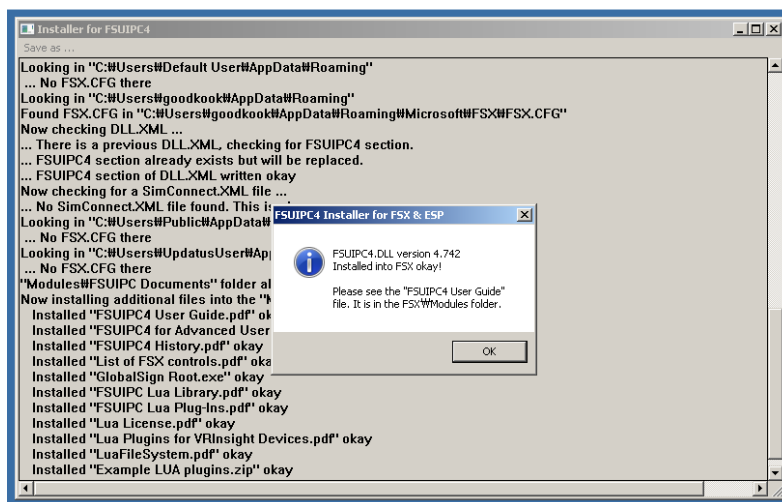


Step 3. Run FSUIPC Installer

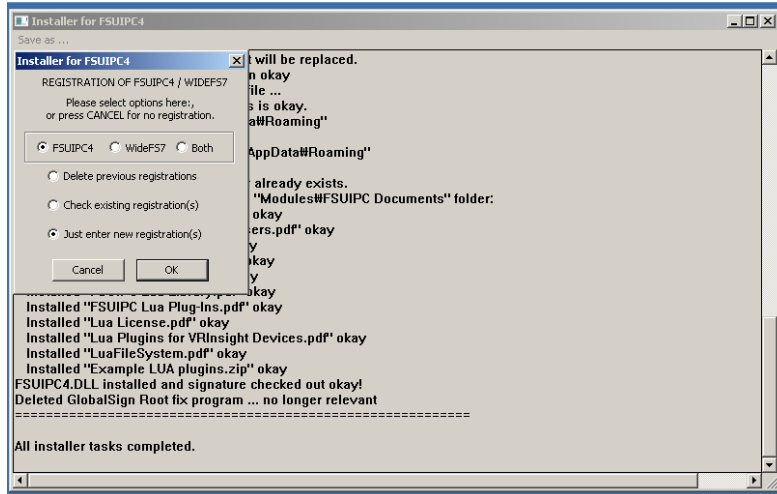
Extract downloaded zip archive "FSUIPC4.zip" and run installer file; "Install FSUIPC4"



Installation success message will be shown as follows;



Finally it'll be prompted for registration of FSUIPC4. Registration code can be entered by pressing "OK" button. Or, select "Cancel" to continue using FSUIPC as unregistered. VRiSim is working with FSUIPC as un-registered version of FSUIPC at API-level.



How to know installed FSUIPC version?

FSUIPC is installed in "Modules" folder under MSFS is installed. Full path string would be as follows, if it was standard installation;

FS 2004:

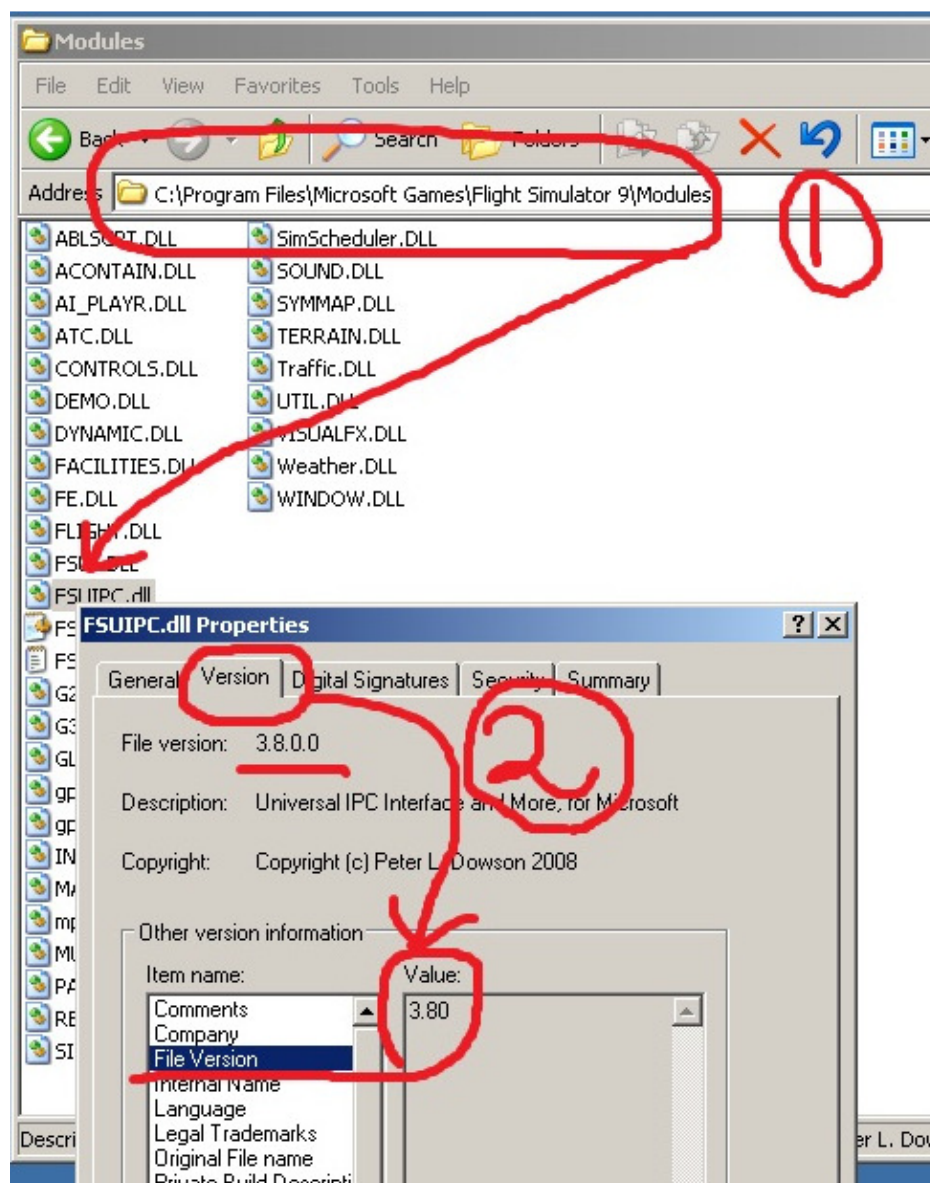
"C:\Program Files\Microsoft Games\Flight Simulator 9\Modules"

FSX:

"C:\Program Files\Microsoft Games\Flight Simulator X\Modules"

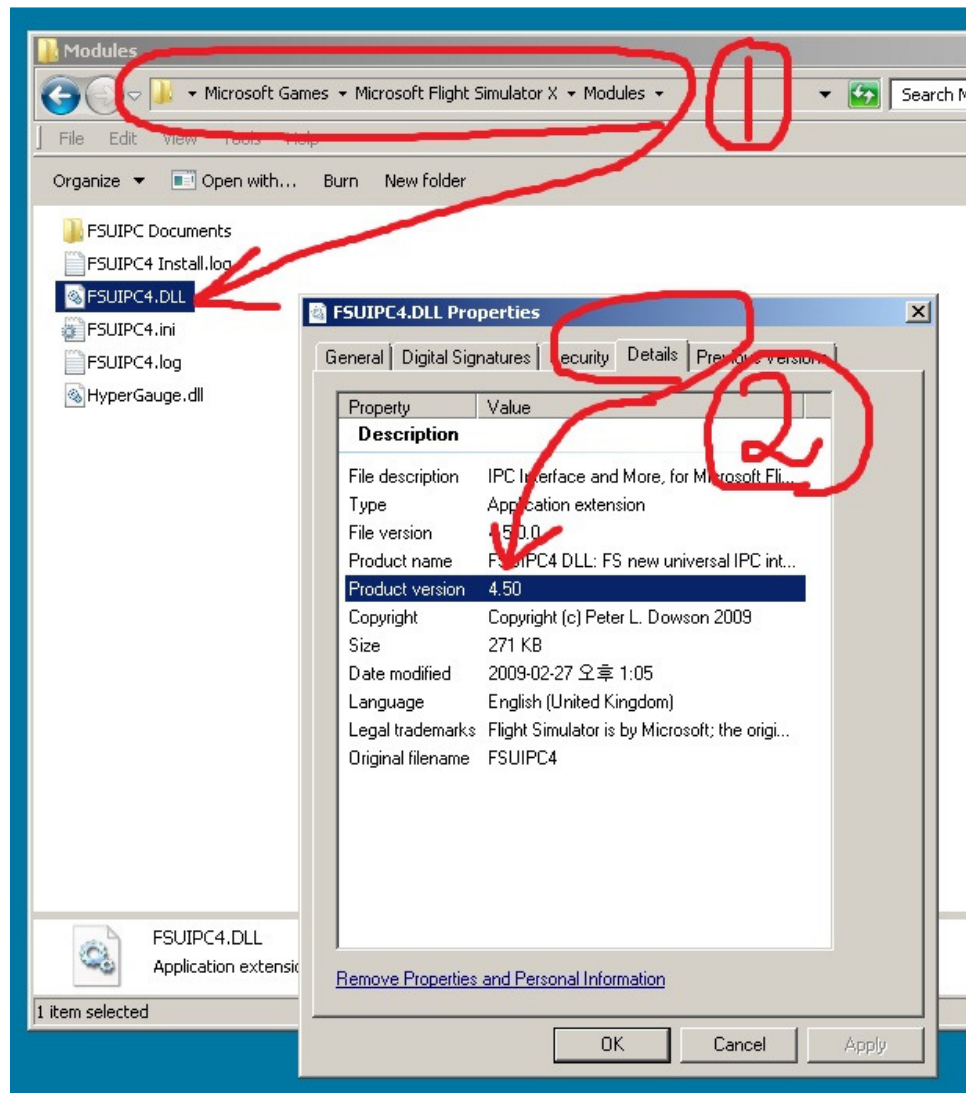
FSUIPC file could be installed without knowing, when you installed add-on aircraft. Verifying installed FSUIPC's version is highly recommended. Major version number of FSUIPC represents which MSFS is for. FSUIPC 3.xx is for FS 2004. FSUIPC 4 is for FSX. To check the version of installed FSUIPC, see relevant number in the screen shot images. Find file "FSUIP.dll" in the "MSFS" "Modules" folder (1) and see version information of the file properties (2).

Following screen shot image is taken in Windows XP and FS 2004. FSUIPC's version number should be 3.7 or above.



FSUIPC for FS 2004, can be re-installed easily. Download the latest version of FSUIPC 3.XX at Peter Dowson's official home page. Extract "FSUIPC.dll" in the downloaded zip archive and copy into the "Modules" folder (or replace with, if it's exists).

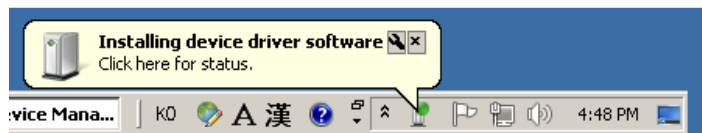
Following screen shot image is taken in Windows 7(Vista) and FSX. FSUIPC's version number should be 4.7 or above.



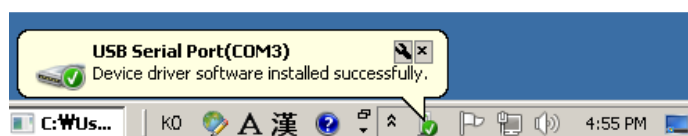
Installation procedure of FSUIPC4 is a bit different from version 3. It is installing executable. Download latest version of FSUIPC 4 at Peter Dowson's official home page. Extract "Install FSUIPC4.exe" in the downloaded zip archive and run it. Installation procedure will be preceded with finding FSX path and coping "FSUIPC4.dll". Finally, it'll be prompted for registration code input. Then, press "Cancel" button.

4. Connecting VRInsight's Flight Panel/Re-install driver software

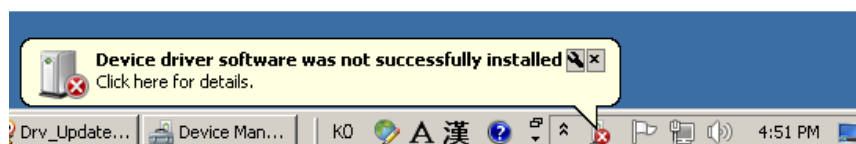
Plug VRInsight Flight Panel's USB connector into PC's USB port. As new device is connected to PC, it'll try to install device driver software.



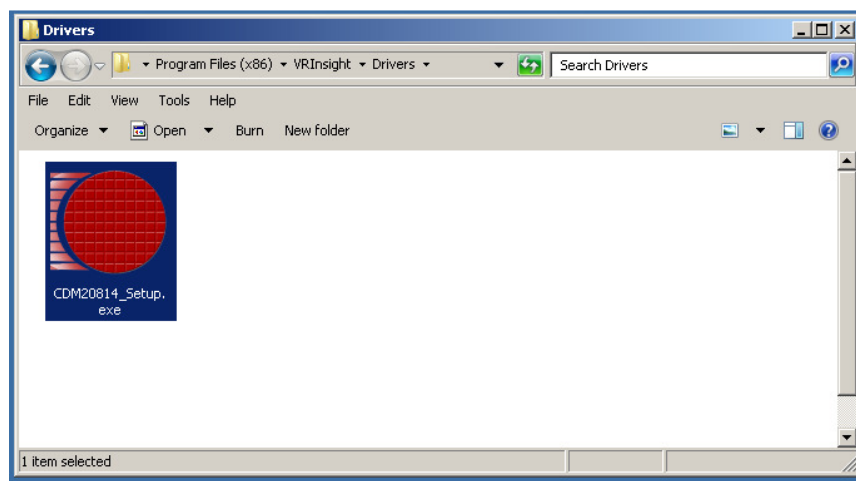
Already the driver software was installed during VRiSim software installation, the new device is recognized as "USB Serial Port(COMx)". Following picture is an example of success message for the new VRinsight's flight panel hardware that is recognized as COM3.



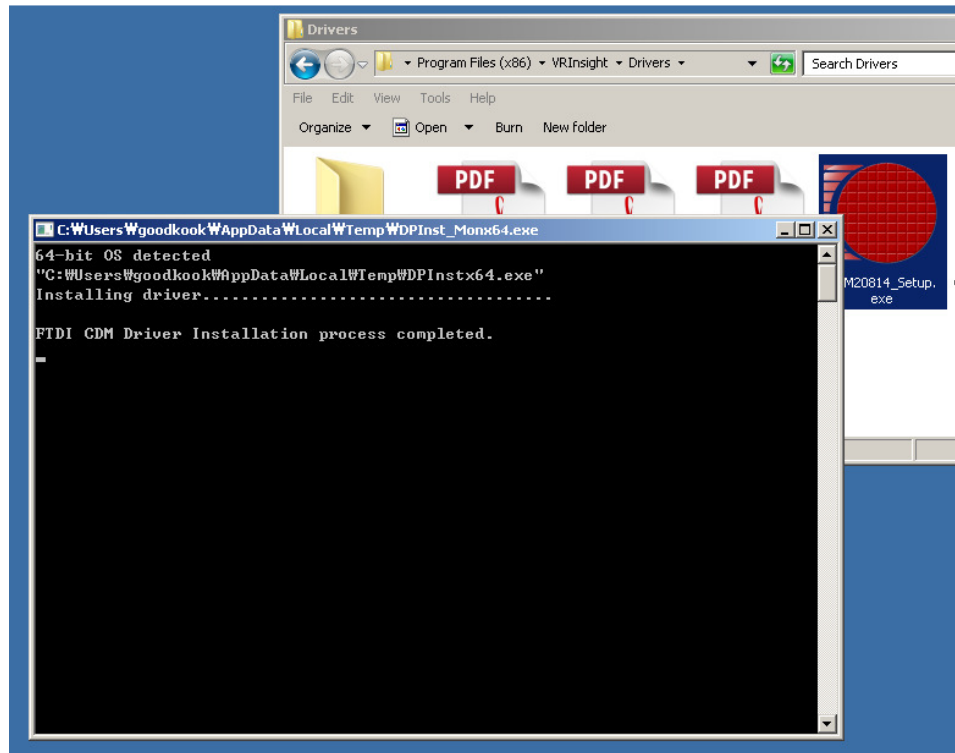
When it fail to install driver software, re-install driver software.



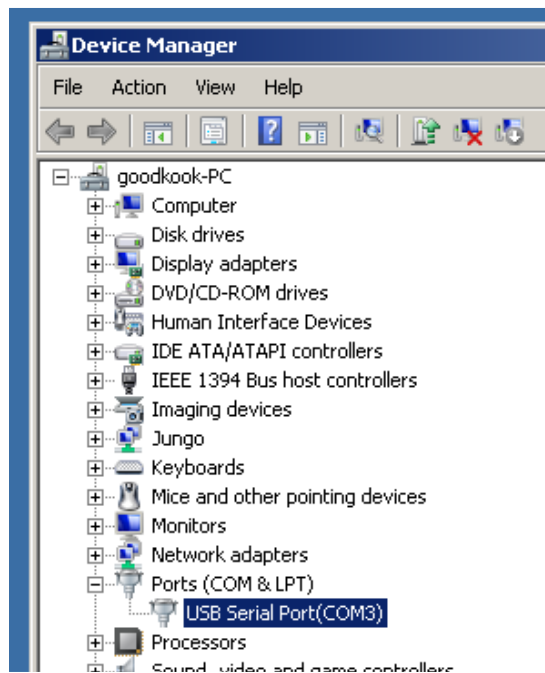
USB-Serial port driver software can be re-installed separately to the VRiSim software installation. Driver installer can be found where the VRiSim is installed (i.e. C:\Program Files (x86)\VRInsight\Drivers). It is "CDM20XXX_Setup.exe" named with software version.



Re-installation of USB-Serial driver is simply to run this installer. Disconnect all VRInsight's flight panel from the PC before running the driver software installer. Temporarily a window is prompted showing "Installing driver....." and ended with completion message. This prompted window will be closed as its completion.



As the driver software installation is done, connect VRinsight's panel to PC's USB port. The VRi panel will be recognized successfully as Serial Port(COMx). Serial port's COM number would be varied to the PC's hardware configurations. Recognized serial port and its COM number for the panel can be confirmed via "Device Manager".



When it's listed as unknown device or exclamation mark on the USB serial port device, re-install the driver software.

5. Running VRiSim Software

VRiSim is managing software for VRinsight's Flight panel application. It interfaces between flight panel hardware and Microsoft's Flight Simulator.

Run VRiSim by double-clicking the icon on desk-top.



Multiple VRi's flight panel hardware can be managed with single VRiSim instance. When VRiSim is launched for the first time, it tries to find all VRinsight's devices connected. Searching procedure could take several minutes.

Searching VRi Devices

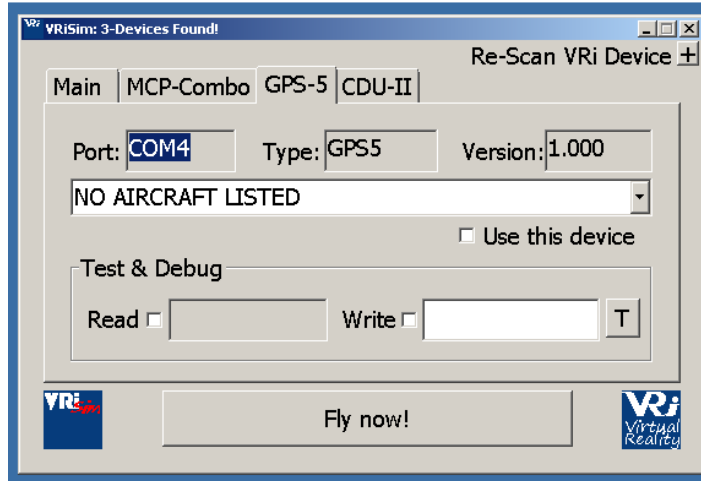
Following message would be displayed as any device is found and connected successfully,

VRi Device Found: CDU-II

Following picture is showing 3 devices, MCP-Combo, GPS-5 and CDU-II, are founded and connected to VRiSim. Each device is listed as separated tab.



By clicking device tab, VRi Flight Panel's connected information can be checked.



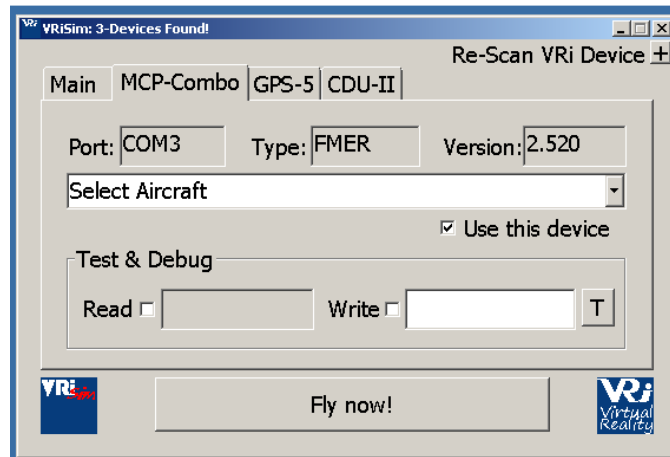
When any of devices that is already connected to PC's USB port and is not listed with device tab, try re-scan VRi device. This re-scan procedure would take several minutes. Founded and connected device list will be saved for the next flight.



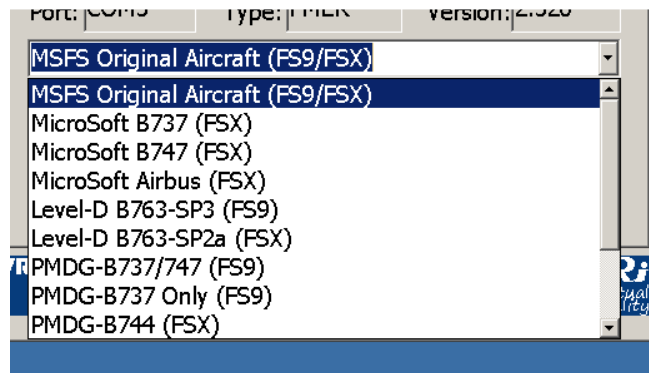
The base-package installer has only VRiSim. If additional device specific module is NOT installed, aircraft selection box will be blanked as showing message "NO AIRCRAFT LISTED".



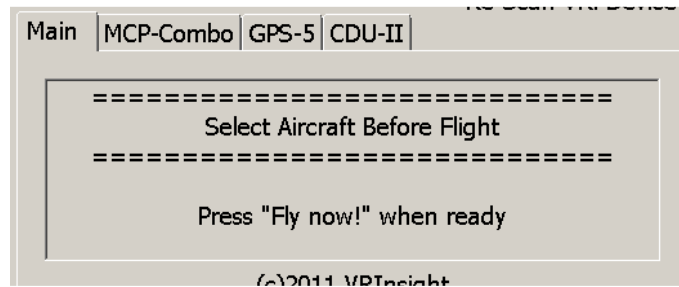
Additionally device specific module should be installed. Then, supported aircrafts are listed in the aircraft selection box. Device specific module installer is supplied with DVD or can be downloaded at the VRInsight's web-page.



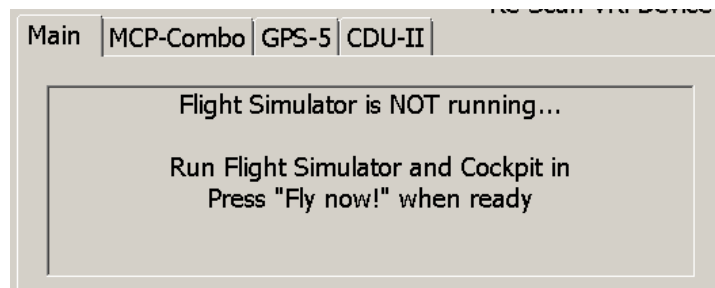
Drop down aircraft selection box to select an aircraft to fly with a flight panel listed.



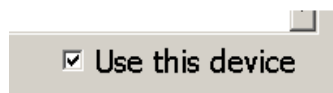
Aircraft must be selected in the each device tab. Then, press “Fly now!” button. When aircraft is NOT selected for the device, following message is displayed in the Main tab. Once aircraft is selected, selection is saved for the next flight.



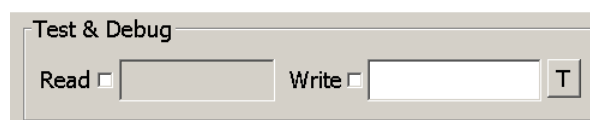
Microsoft's Flight Simulator must be running before pressing VRiSim's “Fly Now!” button. Otherwise, following message will be displayed in the Main tab.



To exclude a device to fly with the aircraft, un-check the box titled “Use this device” in the device tab. This box is un-checked if device specific module software is not installed and no aircrafts are listed.



By checking and/or un-checking the boxes in the “Test & Debug”, commands and messages between VRiSim software and the panel hardware are monitored as debugging purpose.

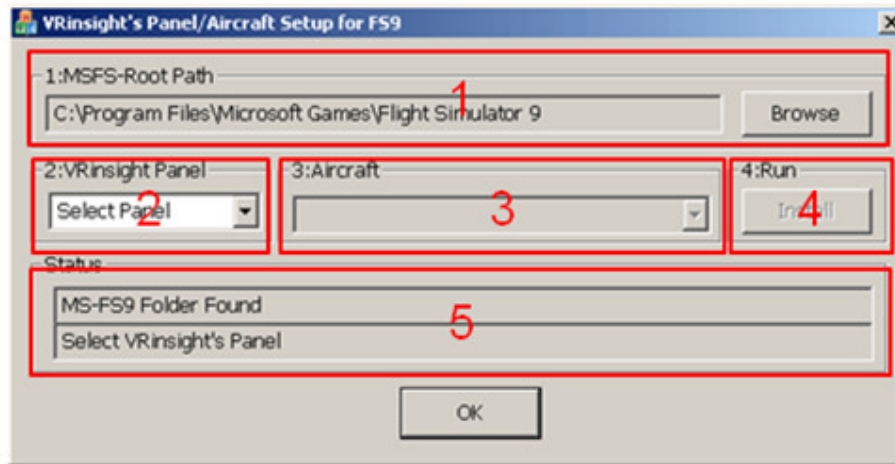


6. Panel Installer

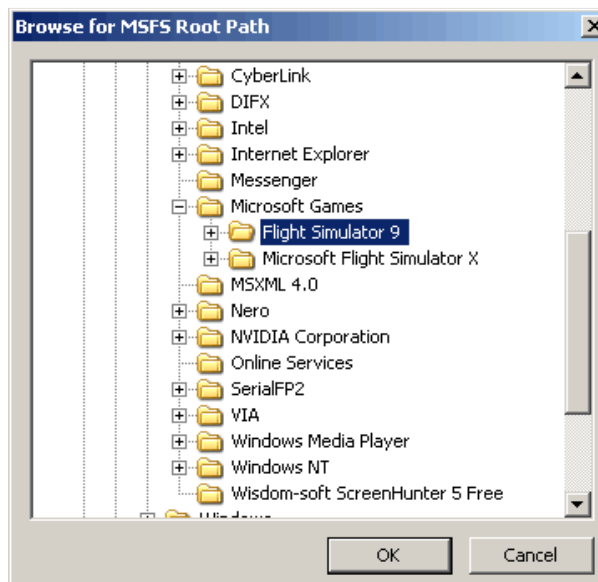
What is “Panel Installer”

To make VRi's flight panel work with MSFS aircrafts, aircraft's panel configuration file, *panel.cfg*, and related initialization file, **.ini*, need to be modified. When this process is done improperly, MCP Combo II Boeing version will not work. “Panel Installer” do this modification properly.

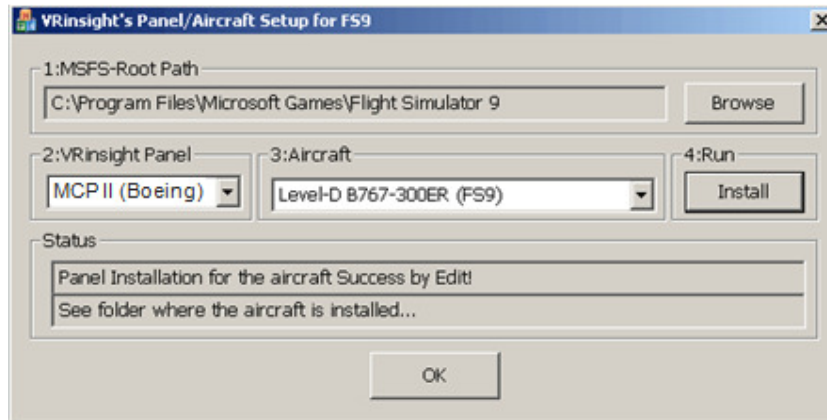
With Panel Installer, when you select proper path, product, aircraft, this process will be a piece of cake.



1. **MSFS-Root Path:** Browse the path where “Flight Simulator 2004” or “Microsoft Flight Simulator” is installed.
 - If “Flight Simulator 2004” or “Microsoft Flight Simulator X” is installed other “Drive” or “Directory”, find the path and click “OK”.
 - If you select a wrong path, “Status” window displays error message.



2. **VRinsight panel:** Select MCP Combo II Boeing.
 3. **Aircraft:** Select your aircraft.
 4. **Run:** Copy & paste all necessary panel data to work MCP Combo II Boeing automatically.
 5. **Status:** Inform current status.
- If everything is done properly, you will get below message



How to start “Panel Installer”

Run “Panel Installer” that can be found in the program group “VRInsight”.

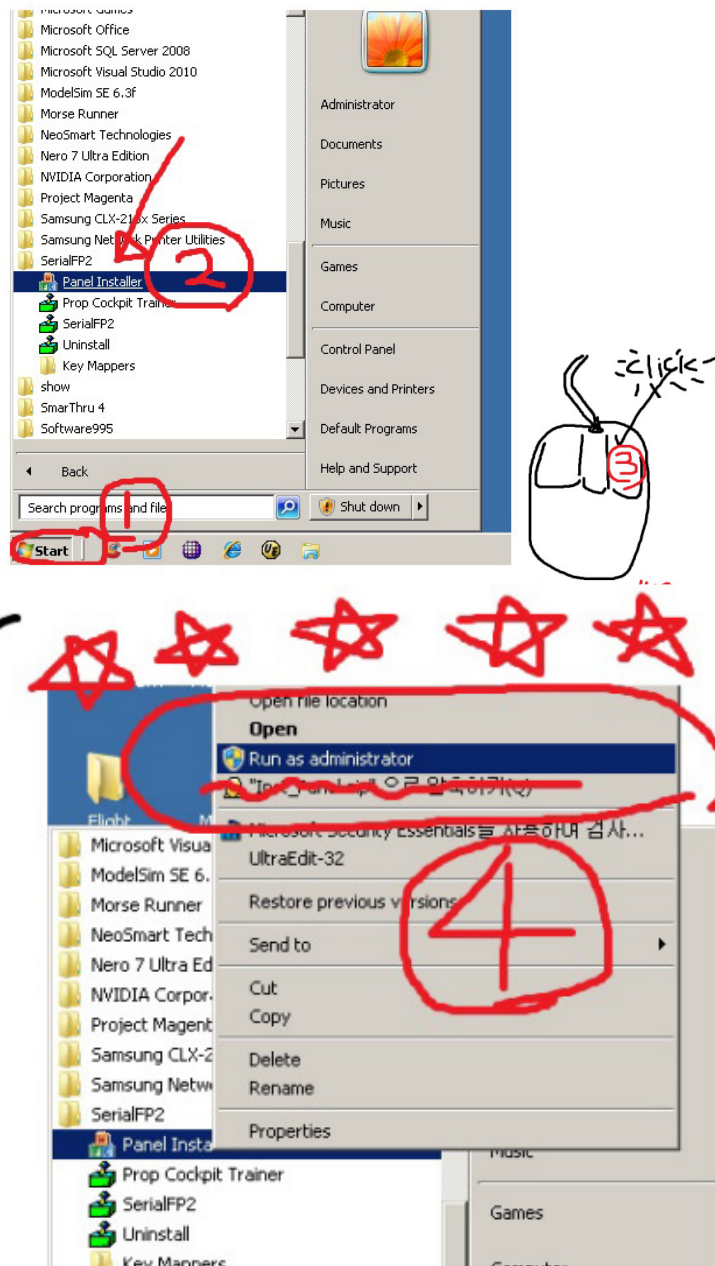
- A. Go to Windows “Start”
- B. Find program group “SerialFP2”
- C. Click “Panel Installer”

IMPORTANT NOTE: “Run As Administrator”

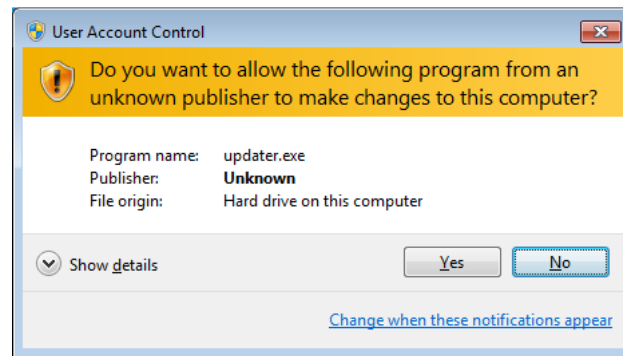
Windows 7 and Vista has more intensive security policy for system safety from accidental corruption of system files. A user can't access system folder (i.e. "Program Files", "Windows") for reading and writing, even if he/she has administrator's privilege. To access these folders, he/she must be "Administrator".

"Panel Installer" or "SerialFP2" try to access system folder to know where FSX/FS 2004 is installed. But it could be blocked if it's not "Run As Administrator". So, please do as following procedure to run software,

- (1) Go to "Start" and find program group "VRInsight"
- (2) Place mouse pointer upon "Panel Installer"
- (3) Click right mouse button
- (4) Click "Run As Administrator"



You'll see a UAC message if you try to "run as administrator". Press "Yes" to allow the software running.



Want to know more about UAC (User Account Control)?
http://en.wikipedia.org/wiki/User_Account_Control