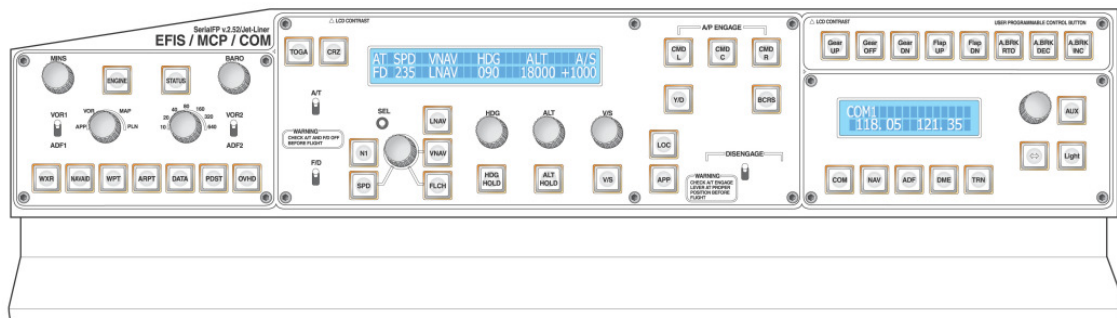


MCP Combo II - Boeing MCP – Boeing Style Flight control panel



Please read this manual before operating your units and keep it for future reference

VRinsight

Contents

1. Introductions

1.1 General	
1.2 Features	
1.3 Display Configurations	
1.4 Controls	

2. Deliverables

3. Hardware Connection

3-1. Plug/Connection diagram	
------------------------------------	--

4. Software installation

4-1. FSUIPC installation.....	
4-2. VRiSim installation.....	
4-3. Panel Installer installation	
4-4. FSX Acceleration installation.....	

5. Quick start

Appendix

FSUIPC	
VRiSim	
Panel Installer	
PMDG 737NGX	
X-Plane (V9 / 32bit only, V10 32bit / 64 bit)	
Control Assignment	

1. Introduction

1.1 General

MCP Combo II - Boeing MCP - features Boeing aircraft panel with full control complement: Default Boeing aircraft (add-on aircraft will be supported continuously, Level-D's B767-300, PMDG's B737NGX & 744, iFly 737NG). It is completely interface with MSFS9 and MSFSX through add-on software "VRiSim" which enables MCP Combo II - Boeing MCP - to perform full simulation with simple USB connection to your computer.

MCP Combo II - Boeing MCP - is comprised of EFIS, MCP & COM part (Instrument Radio) to understand advanced flight controls for beginner and intermediate users starting flight simulation at a first step.

Each part had push buttons, rotary knobs, toggle switches and 2 lines character type LCDs offering actual flight circumstance

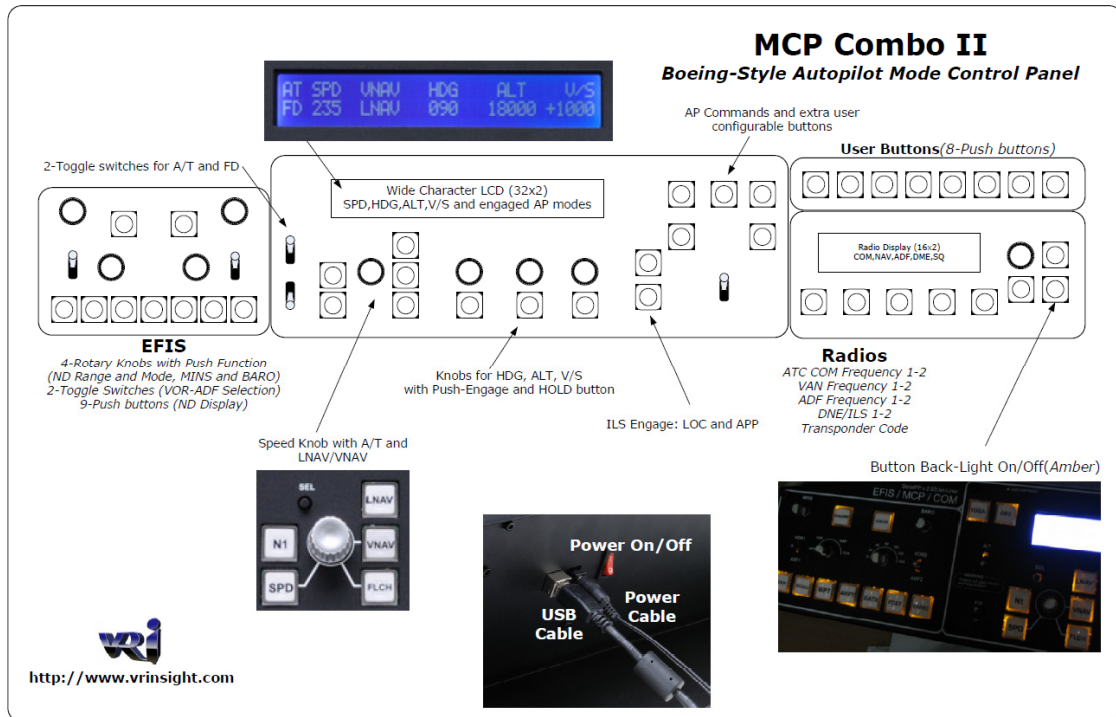
1.2 Features

- Boeing shaped configuration
- Integrated unit with full radio stack function : EFIS part, MCP part, COM part
- SPD, VOR, HDG, ALT, V/S, Auto Pilot status display
- COM 1/2, NAV 1/2, ADF, DME 1/2, TRN display
- Full metal enclosure plate and stand
- USB 2.0 compliant connection for control interface
- Power source : D.C 5V
 - D.C 5V adaptor is included in the package.
- Decal buttons
- Day/Night mode select
 - Built in Amber color LEDs for Night mode
- Main power ON/OFF button
- Compatible with Microsoft's Flight Simulator X and 2004 Original Boeing (FSX & 2004)

NOTE : *Limited functions are available for Original Boeing*

- Compatible with Microsoft Windows XP, Vista and Windows 7
- Size & Weight
 - Width: 50.5cm/19.9"
 - Height: 13cm/5.1"
 - Length: 11.5cm/4.5"
 - Weight: 4Kg
- 1 year warranty

VRinsight
MCP Combo II - Boeing MCP -



VRinsight

MCP Combo II - Boeing MCP -

1.3 Display Configurations

MCP Combo II – Boeing MCP - has configuration of Boeing style flight control panel. Its displaying area is divided into 2 windows; MCP part and Radio part.

- MCP part displays SPD, HDG, ALT, V/S, A/T, F/D, VNAV, LNAV information
- Radio part displays COM 1/2, NAV 1/2, ADF, DME 1/2, TRN information



VRinsight MCP Combo II - Boeing MCP -

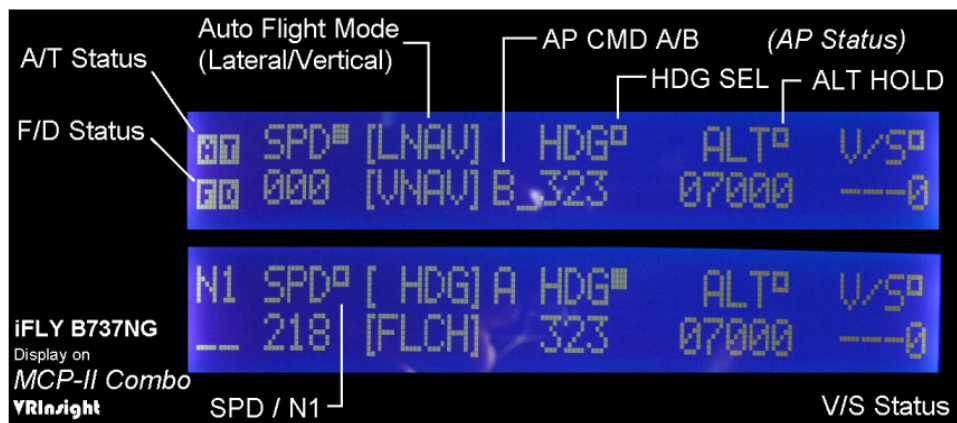
1.4 Controls

EFIS part



EFIS on MCP Combo II/Boeing Style Panel

MCP part on MCP Combo II - Boeing MCP -



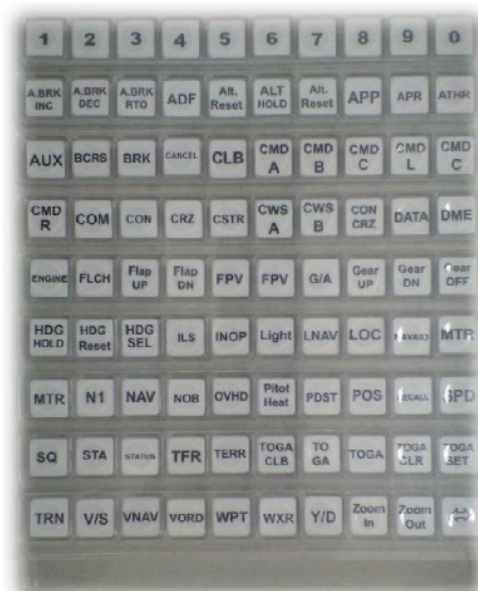
VRinsight
MCP Combo II - Boeing MCP -

Radio part



VRinsight MCP Combo II - Boeing MCP -

2. Deliverables

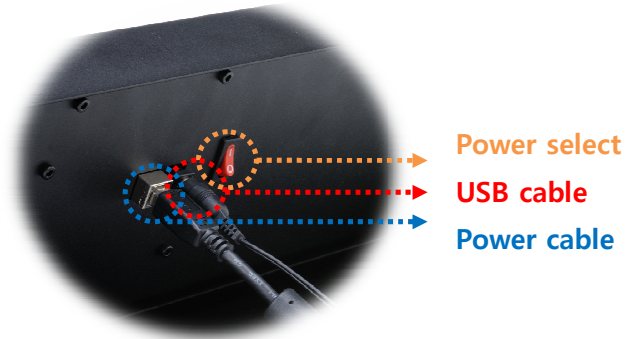


1	2	3	4	5	6	7	8	9	0
A.BRK INC	A.BRK DEC	A.BRK RTO	ADF	ALT HOLD	Alt Reset	APP	APR	ARPT	ATHR
AUX	BCRS	BRK	CANCEL	CLB	CMD A	CMD B	CMD C	CMD L	CMD C
CMD R	COM	CON	CRZ	CSTR	CWS A	CWS B	CON CRZ	DATA	DME
ENGINE	FLCH	Flap UP	Flap DN	FPV	FPV	G/A	Gear UP	Gear DN	Gear OFF
HDG HOLD	HDG Reset	HDG SEL	ILS	INOP	Light	LNAV	LOC	NAVAID	MTR
MTR	N1	NAV	NOB	OVHD	Pitot Heat	PDST	POS	RECALL	SPD
SQ	STA	STATUS	TFR	TERR	TOGA	TO GA	TOGA CLB	TOGA CLR	TOGA SET
TRN	V/S	VNAV	VORD	WPT	WXR	Y/D	Zoom In	Zoom Out	↔

NOTE : Since decal buttons will not be attached, be sure all necessary decal buttons are in the tray before unpacking.

3. Connection

3-1. Plug/Connection Diagram



- Power select button is for ON/OFF of LCD display
- USB cable (A to B type) is for interface
- Power cable (D.C 5V) is for power source

4. Software Installation

4-1. FSUIPC installation

*NOTE : See the **Appendix** for **FSUIPC** part on how to install **FSUIPC**.*

4-2. VRiSim installation

Driver and application software “**VRiSim**” is installed to make MCP Combo II - Boeing MCP - work in the PC.

VRiSim is application software managing VRInsight's flight simulation hardware panels. Multiple hardware panels can be used with single instance of **VRiSim**. To reduce distributing file size, software installer is supplied as divided package; base-package and device specific module package. The base-package installs only **VRiSim** and Panel Installer utility.

Installer executable is divided into **base package** and **device specific modules**. **VRiSim** is included in the base-package setup installer, "**Install_VRiSim.exe**".

Base-Package Installer:

The base-package installer can be found in the supplied DVD,

\VRiSim\Install_VRiSim.exe

Device Specific Module Package Installer:

The MCP-II Combo module installer can be found in the supplied DVD,

\VRiSim\Install_MCP-II_Combo.exe

Or downloaded at VRInsight's web-page, http://www.vrinsight.com/devel_shot

*NOTE: See the **Appendix** for **VRiSim** part on how to install **VRiSim**.*

4-3. Panel Installer installation

Panel Installer software configures each aircraft to use in MCP Combo II – Boeing MCP -. Once it is done, no additional configuration is required.

*NOTE : See the **Appendix** for **Panel Installer** on how to configure the aircraft*

4-4. FSX Acceleration pack installation

*NOTE : Be sure that **FSX** acceleration pack should be installed*

5. Quick Start

VRiSim is new software developed for interfacing VRinsight's hardware unit to Microsoft's Flight Simulator. After installation of **VRiSim** software, short-cut icons will be created on your desk-top; **VRiSim**. **VRiSim** is used in replacing with SerialFP2 software for MCP Combo II – Boeing MCP -.



NOTE : *Section 4. Software installation should be done.*

Step 1. Run Flight Simulator 2004 / Microsoft Flight Simulator X

Run Flight Simulator 2004 / Microsoft Flight Simulator X and select an aircraft. Press “FLY NOW”.

NOTE : *Be sure that the selected aircraft should be configured through the **Panel Installer** in advance.*

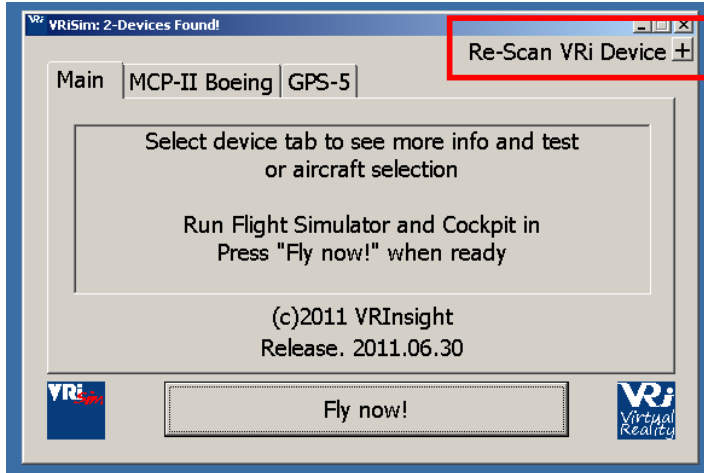
Step 2. Run VRiSim


Double-click “**VRiSim**” short-cut icon to run. “**VRiSim**” search all VRinsight hardware units and list up found device(s). Device searching process could be taken several minutes. Following image is showing that two device, **MCP Combo II - Boeing MCP -** and **GPS-5** are found and listed by “**VRiSim**” software. “**VRiSim**” manages multiple devices.



NOTE : *In the **VRiSim** software, MCP-II Boeing means MCP Combo II - Boeing MCP -*

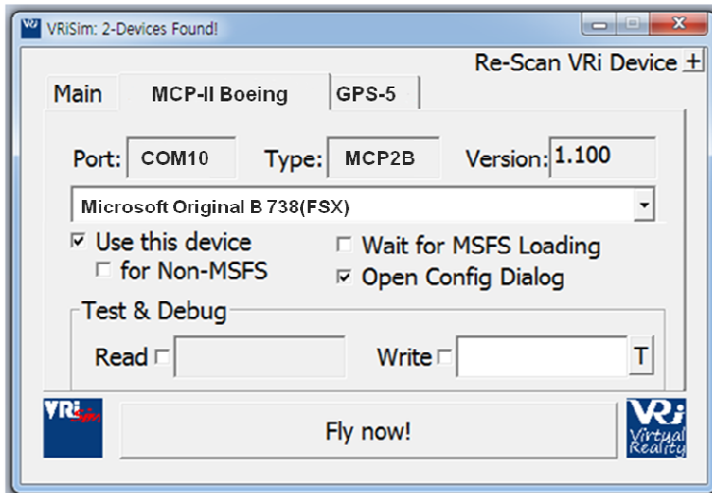
VRinsight MCP Combo II - Boeing MCP -



NOTE : Even if your MCP Combo II – Boeing MCP – is connected to your computer and **VRISim** does not find it, press  in order to find all VRinsight hardware units again.

Step 2. Select Aircraft

Open device's tab to select "Aircraft".

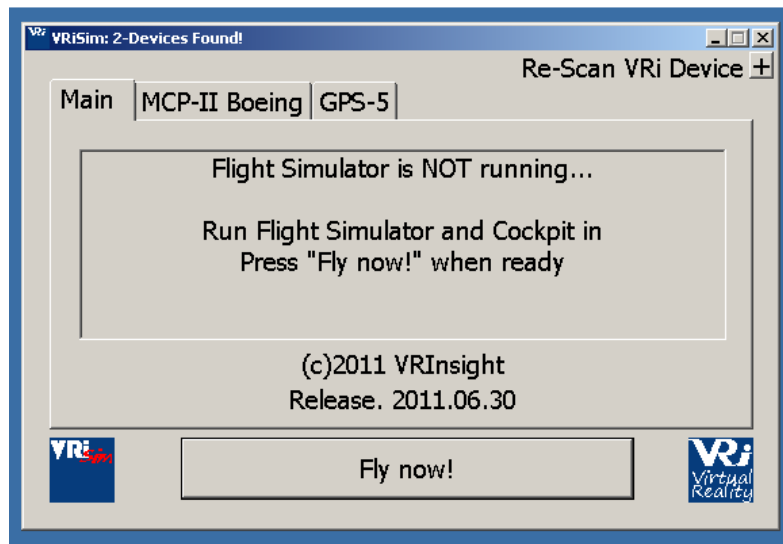


Step 3. Fly Now!

As the aircrafts are specified to fly with VRi's unit, press "Fly Now!" button.

NOTE : Remember that Flight Simulator should be running and you are in-cockpit before pressing this button. Otherwise, you will see following message.

VRinsight
MCP Combo II - Boeing MCP -



Appendix

FSUIPC
VRiSim
Panel Installer
PMDG 737 NGX

VRinsight, ©2012

FSUIPC

1. FSUIPC Installation

FSUIPC is add-on module for Microsoft's Flight Simulator. VRInsight's hardware panel interacts with Flight Simulator via FSUIPC. **VRiSim** is bridging VRInsight's hardware panel and Flight Simulator via FSUIPC. Actually FSUIPC is pay-ware. **VRiSim** is working with unregistered version of FSUIPC under the API level usage agreement with Pete Dowson. You have the option to pay for additional features in FSUIPC.

Step 1. Getting latest FSUIPC

To download latest version of FSUIPC, visit Pete Dowson's web-page,

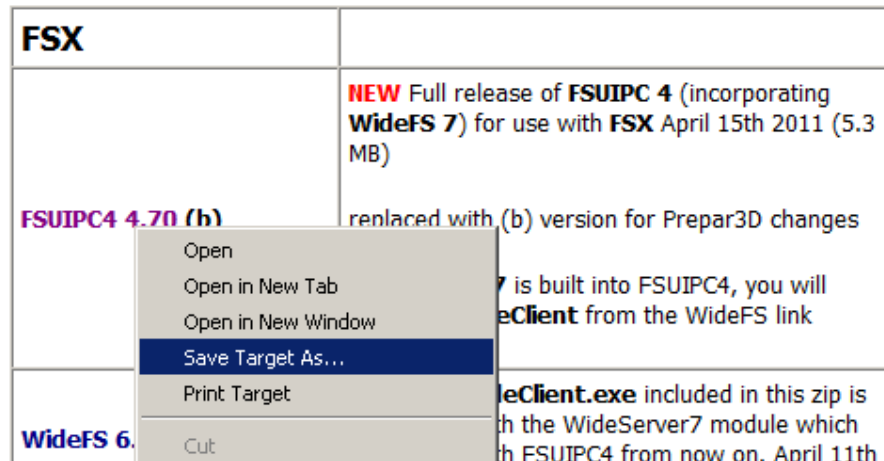
<http://www.schiratti.com/dowson.html>

Web browser will be directed to FSUIPC download page, if "Visit Pete Dowson's FSUIPC page" is checked.

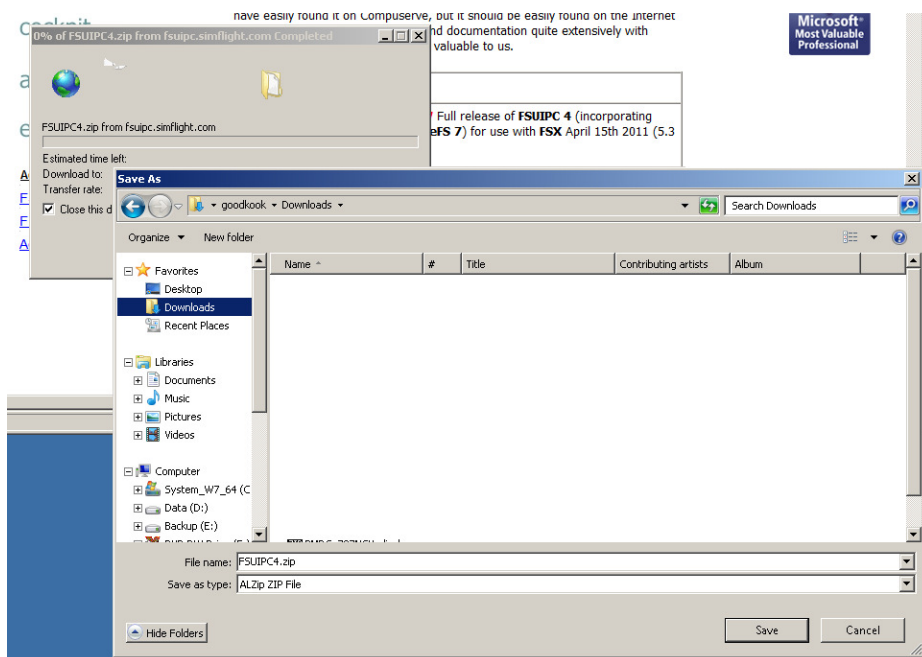


Step 2. Download FSUIPC

Click right-mouse button to FSUIPC4 download link and select "Save Target-As..."



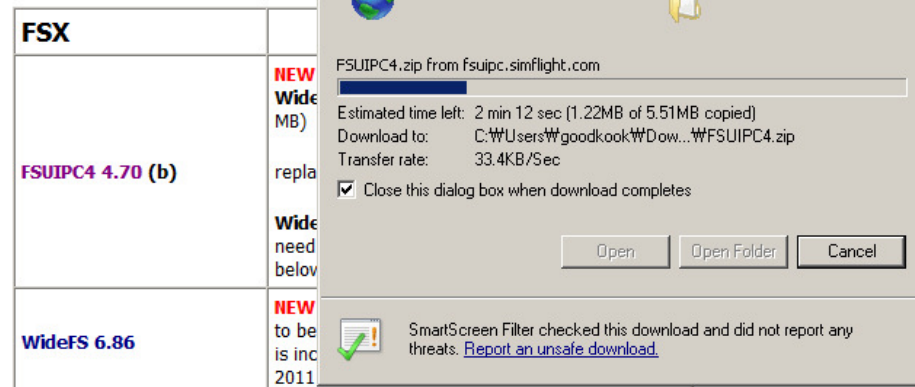
Specify a folder where the FSUIPC4.zip is saved (i.e. "Download"),



It'll take several minutes depending on internet connection.

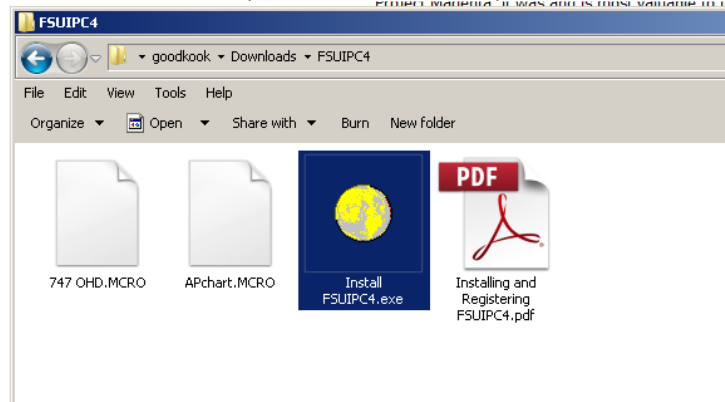
Peter Dowson's Support Forum [Please use this to contact Peter]

I had been searching for a link to Peter's WideFS following a request, and I had some trouble finding the newest postable version of his software. Ok, I could have easily found it on Compuserve, as well. We use Peter's programs at Project Magenta, it was and is most

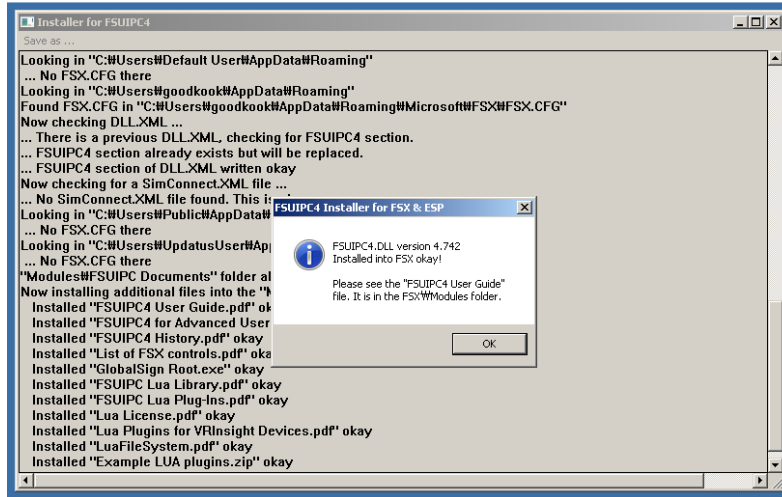


Step 3. Run FSUIPC Installer

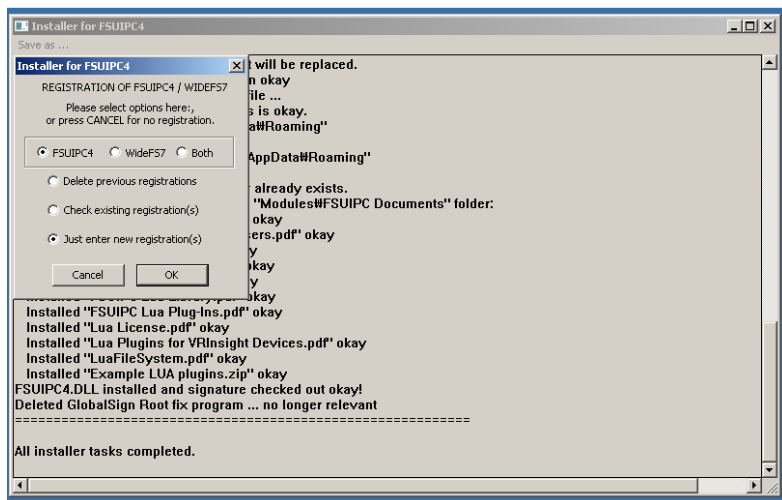
Extract downloaded zip archive "FSUIPC4.zip" and run installer file; "Install FSUIPC4"



Installation success message will be shown as follows;



Finally it'll be prompted for registration of FSUIPC4. Registration code can be entered by pressing "OK" button. Or, select "Cancel" to continue using FSUIPC as unregistered. **VRiSim** is working with FSUIPC as un-registered version of FSUIPC at API-level.



How to know installed FSUIPC version?

FSUIPC is installed in "Modules" folder under MSFS is installed. Full path string would be as follows, if it was standard installation;

FS 2004:
"C:\Program Files\Microsoft Games\Flight Simulator 9\Modules"

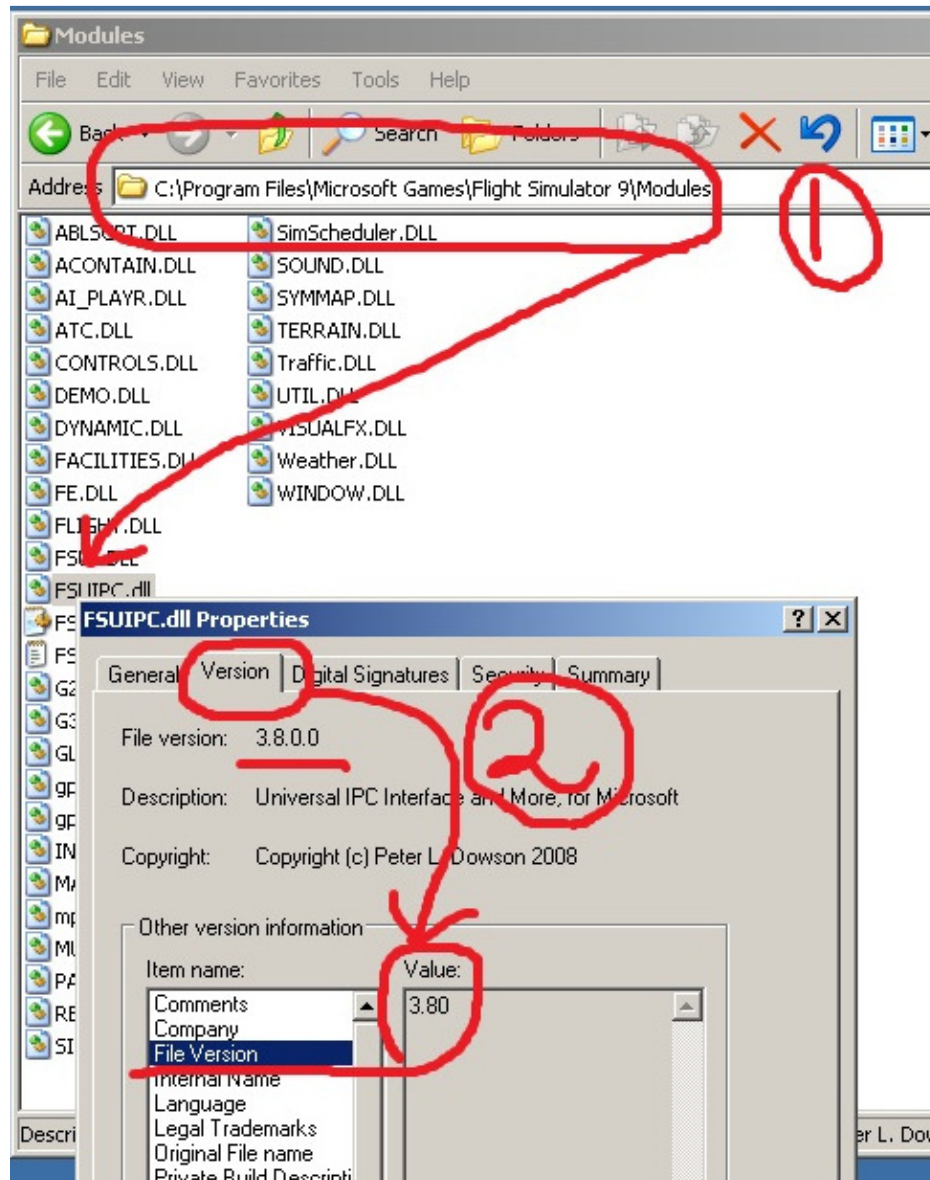
FSX:
"C:\Program Files\Microsoft Games\Flight Simulator X\Modules"

FSUIPC file could be installed without knowing, when you installed add-on aircraft. Verifying installed FSUIPC's version is highly recommended. Major version number of

VRinsight
MCP Combo II - Boeing MCP -

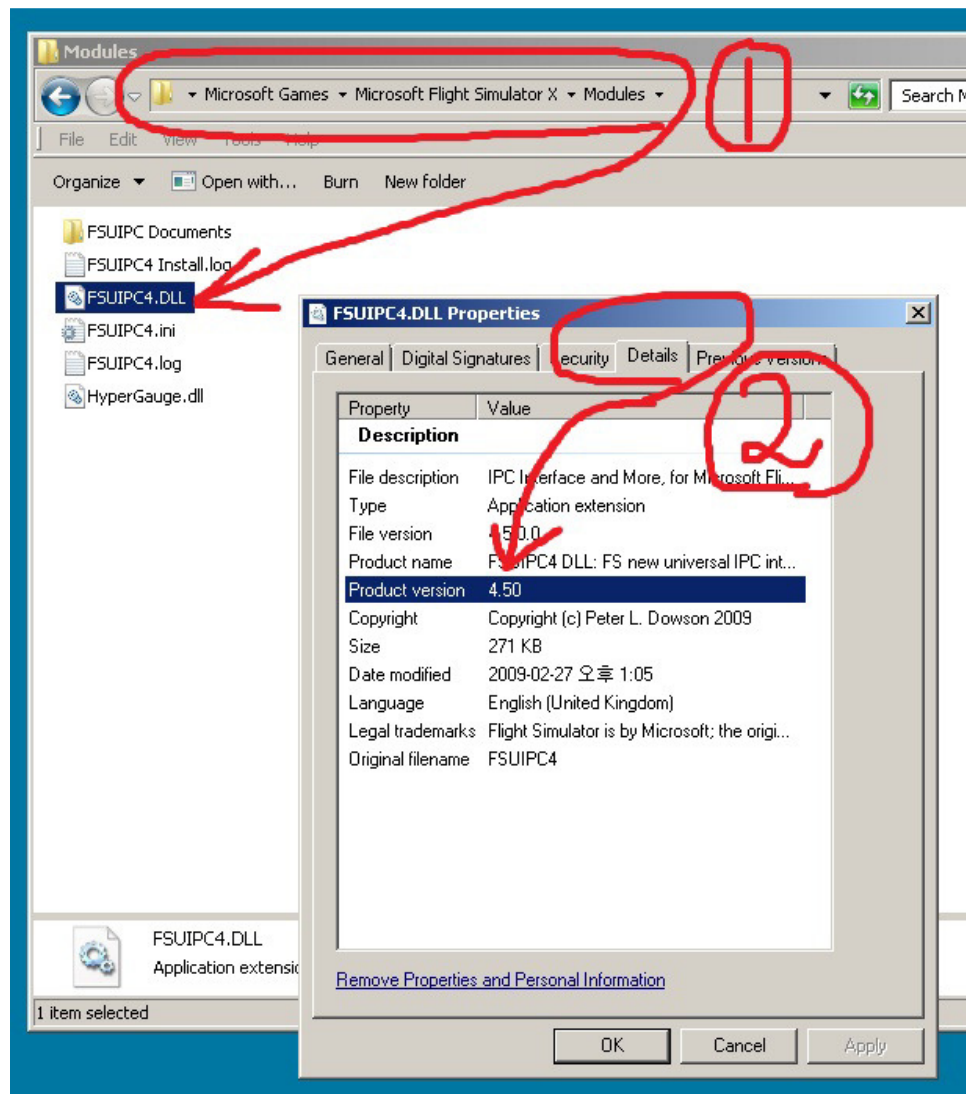
FSUIPC represents which MSFS is for. FSUIPC 3.xx is for FS 2004. FSUIPC 4 is for FSX. To check the version of installed FSUIPC, see relevant number in the screen shot images. Find file "FSUIP.dll" in the "MSFS" "Modules" folder (1) and see version information of the file properties (2).

Following screen shot image is taken in Windows XP and FS 2004. FSUIPC's version number should be 3.7 or above.



FSUIPC for FS 2004, can be re-installed easily. Download the latest version of FSUIPC 3.XX at Peter Dowson's official home page. Extract "FSUIPC.dll" in the downloaded zip archive and copy into the "Modules" folder (or replace with, if it's exists).

Following screen shot image is taken in Windows 7(Vista) and FSX. FSUIPC's version number should be 4.7 or above.



Installation procedure of FSUIPC4 is a bit different from version 3. It is installing executable. Download latest version of FSUIPC 4 at Peter Dowson's official home page. Extract "Install FSUIPC4.exe" in the downloaded zip archive and run it. Installation procedure will be preceded with finding FSX path and coping "FSUIPC4.dll". Finally, it'll be prompted for registration code input. Then, press "Cancel" button.

VRiSim

1. Introduction

VRiSim is application software managing VRInsight's flight simulation hardware panels. **VRiSim** can be used in replacement of SerialFP2. Multiple hardware panels can be used with single instance of **VRiSim**.

To reduce distributing file size, software installer is supplied as divided package; base-package and device specific module package. The base-package installs only **VRiSim** and **Panel Installer** utility.

VRiSim is applicable for Microsoft's Flight Simulator.

2. VRiSim Installation

Installer executable is divided into base package and device specific modules. **VRiSim** is included in the base-package setup installer, "Install_VRiSim.exe".

The base-package installer can be found in the supplied DVD,

\\VRiSim\\Install_VRiSim.exe

Or downloaded at VRInsight's web-page, http://www.vrinsight.com/devel_shot

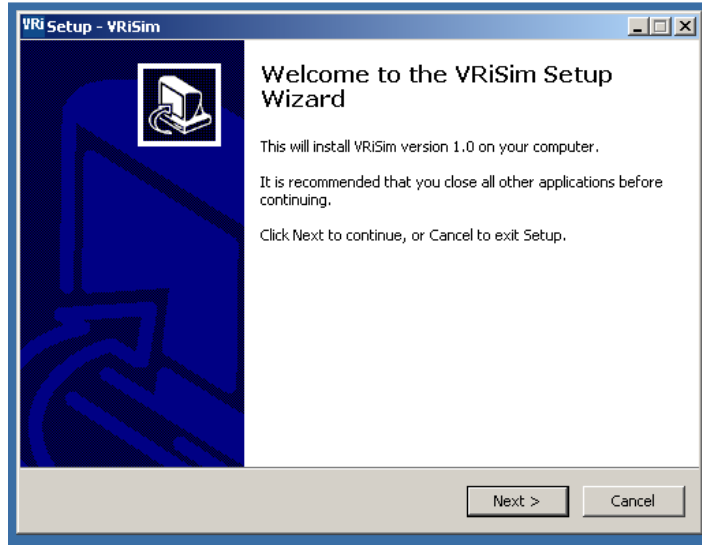
Step 1. Run Base-Package Installer

Run base-package installer "Install_VRiSim.exe" by double clicking.



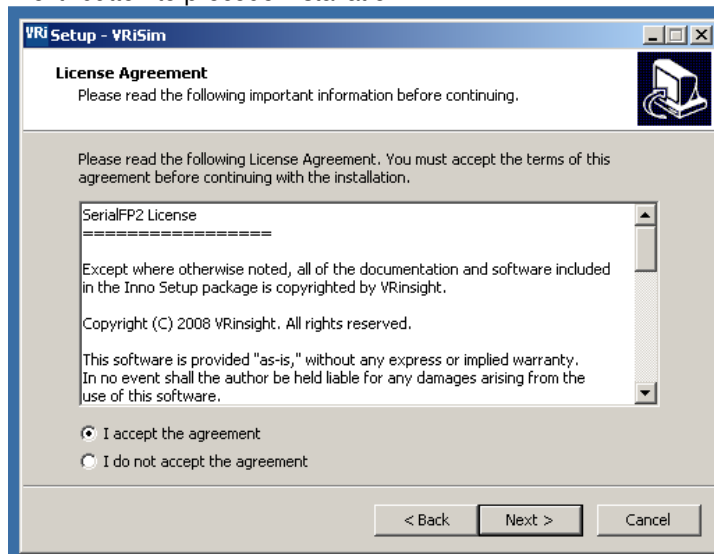
Install_VRiSim.exe

Press Next button on **VRiSim** setup wizard window



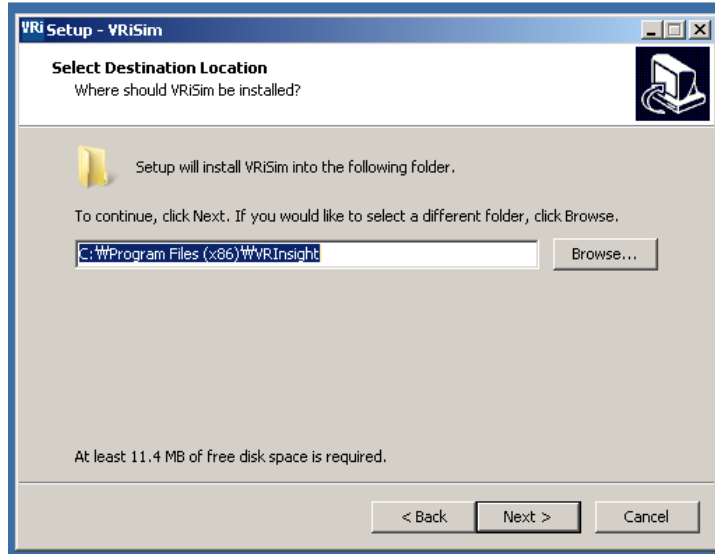
Step 2. License Agreement

Read License Agreement and check "Accept agreement" radio button. Then press "Next" button to precede installation.



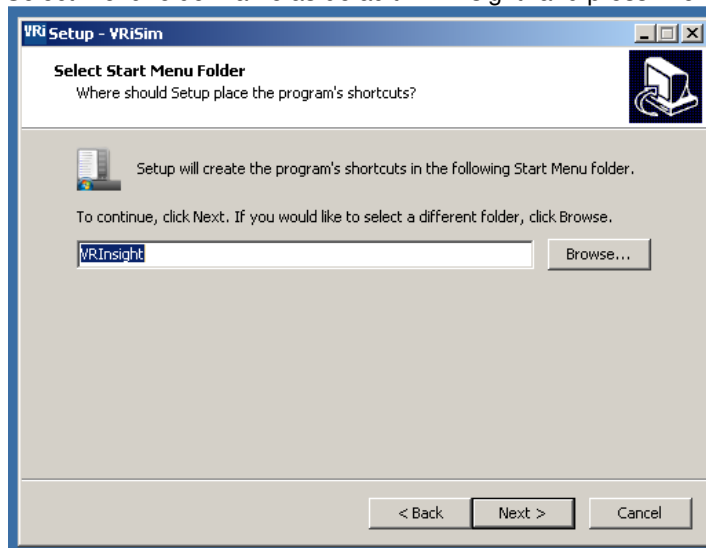
Step 3. Select Destination Location

Keeping default destination location of installed folder is highly recommended. Press "Next" button.



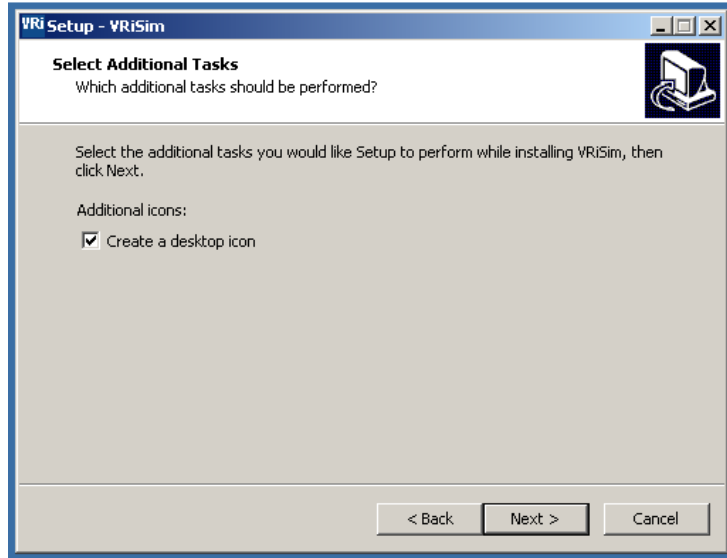
Step 4. Select Menu Folder

Select Menu folder name as default "VRInsight" and press "Next" button.



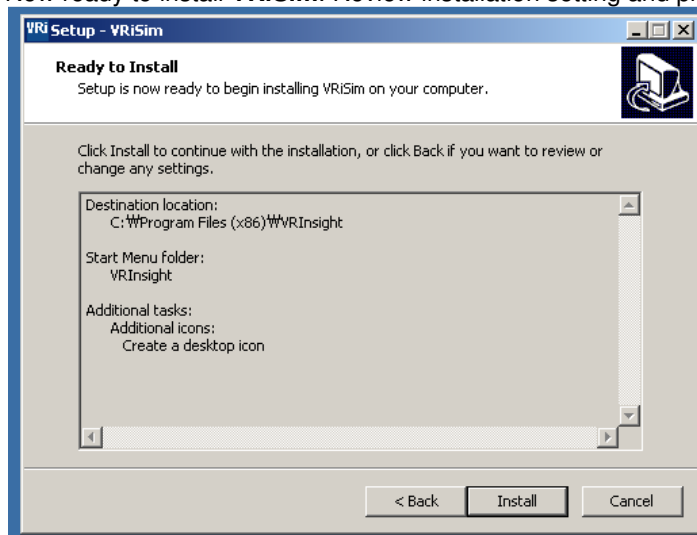
Step 5. Create a desk-top icon

Check "Create a desk-top icon". **VRiSim** icon will be created after installation. Press "Next".



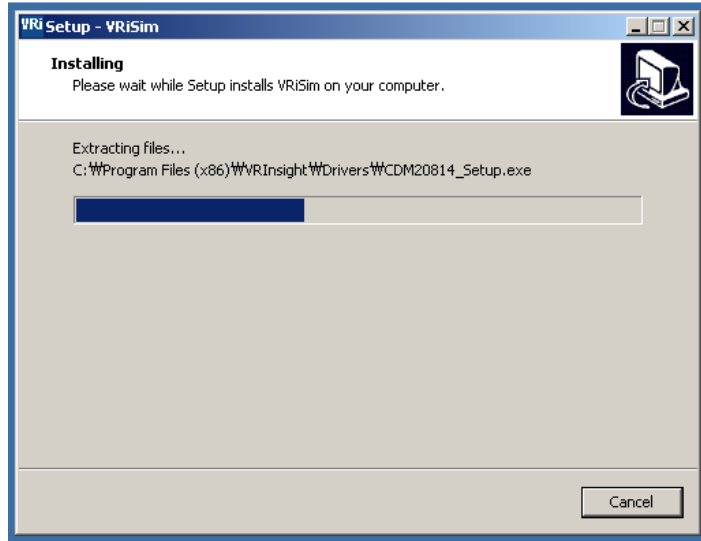
Step 6. Ready to install

Now ready to install **VRiSim**. Review installation setting and press "Install" button.



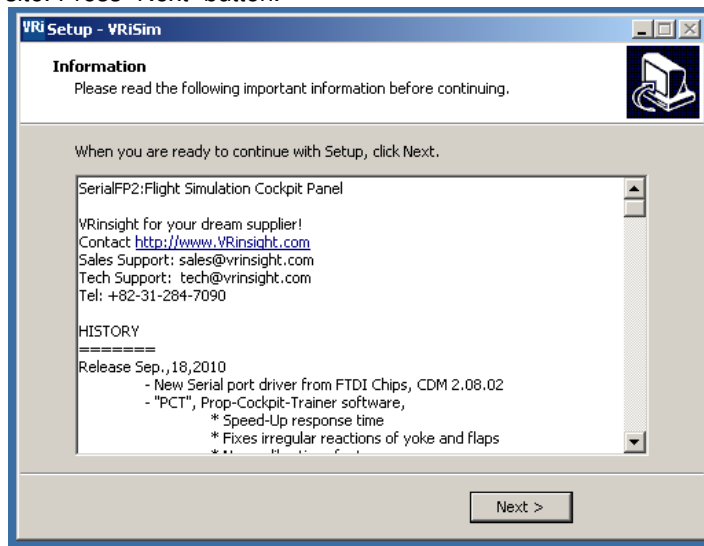
Step 7. Installing

Files are extracted and copied into destination folder during installing step. Animated bar-graph is showing installing process.



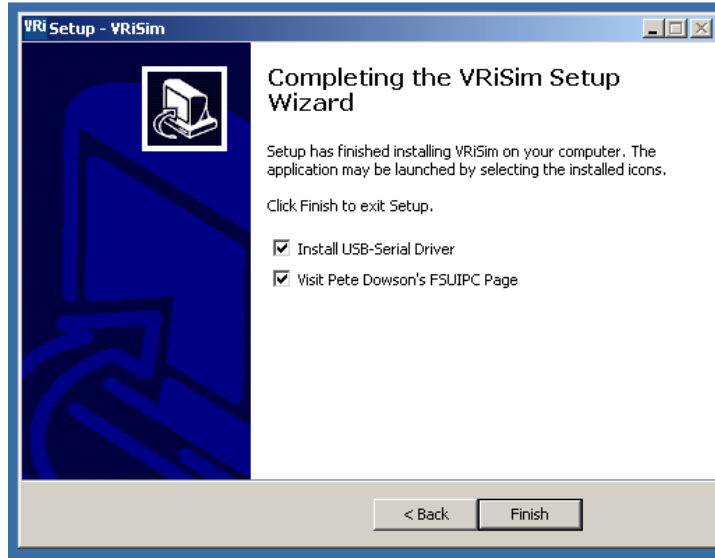
Step 8. Information

Read this information of sales and tech-support e-mail address, VRinsight's web-site. Press "Next" button.



Step 9. Install USB-Serial Driver

VRInsight's flight panel is connected to PC's USB port and communicated via serial port. By check "Install USB-Serial Driver", the driver software will be installed automatically at the finishing phase of installation procedure. The USB-Serial Driver can be installed separately to the **VRiSim** installation. Optionally, visit Pete Dowson's web page to get latest version of FSUIPC modules.



NOTE: Install device specific module

The base-package installer only installs basic utilities; “**VRiSim**” and “**Panel Installer**”. Additionally device specific module must be installed. These installers are found in the supplied DVD under the folder named “**VRiSim**”. Or downloaded at VRInsight’s web-page, http://www.vrinsight.com/devel_shot

3. MCP Combo II module Installation

MCP Combo II module is included in the “Install_MCP-II_Combo.exe”.

The base-package installer can be found in the supplied DVD,
\\VRiSim\\Install_MCP-II_Combo.exe

Or downloaded at VRInsight’s web-page, http://www.vrinsight.com/devel_shot

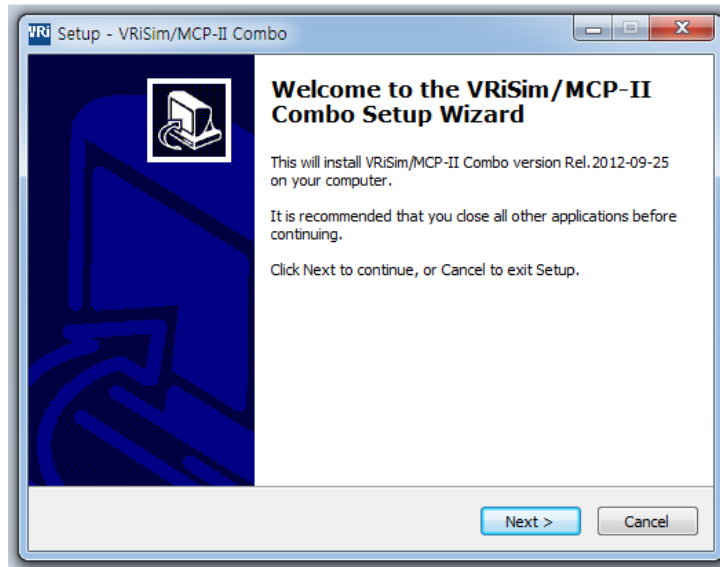
Step 1. Run MCP-II Combo Installer



Run “Install_MCP-II_Combo.exe”

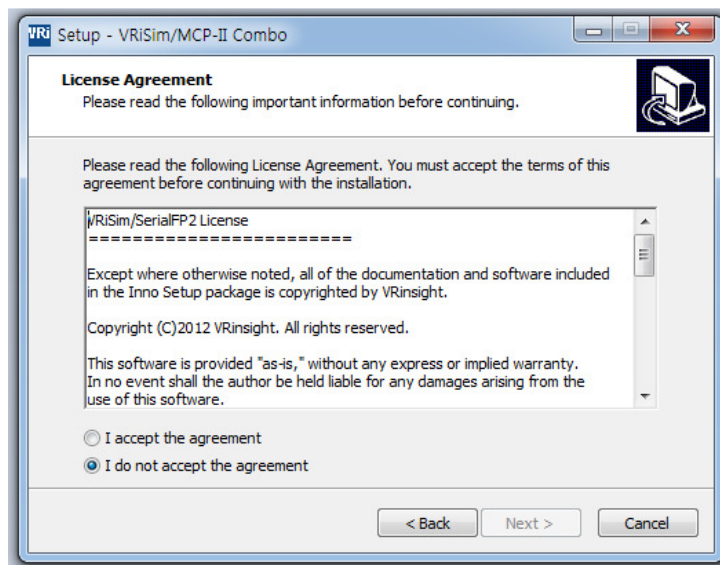
VRinsight **MCP Combo II - Boeing MCP -**

Press Next button on VRiSim/MCP-II Combo setup wizard window



Step 2. License Agreement

Read License Agreement and check "Accept agreement" radio button. Then press "Next" button to precede installation.

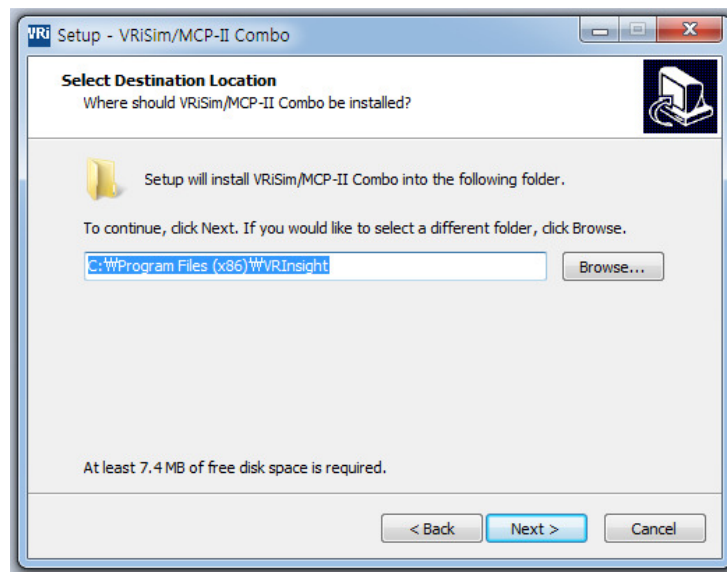


VRinsight

MCP Combo II - Boeing MCP -

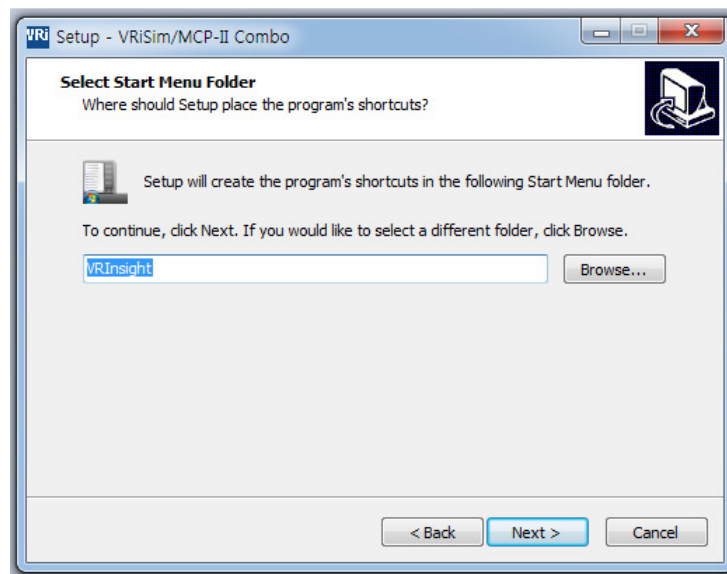
Step 3. Select Destination Location

Keeping default destination location of installed folder is highly recommended. Press “Next” button.



Step 4. Select Menu Folder

Select Menu folder name as default “VRInsight” and press “Next” button.

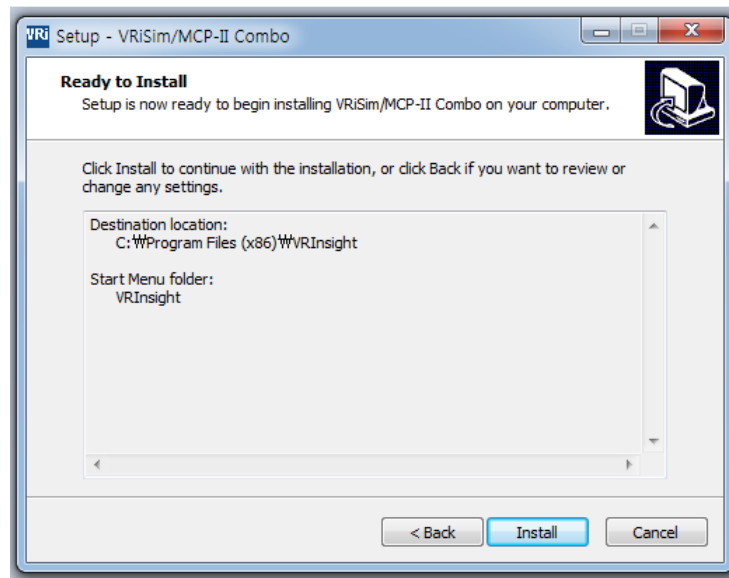


VRinsight

MCP Combo II - Boeing MCP -

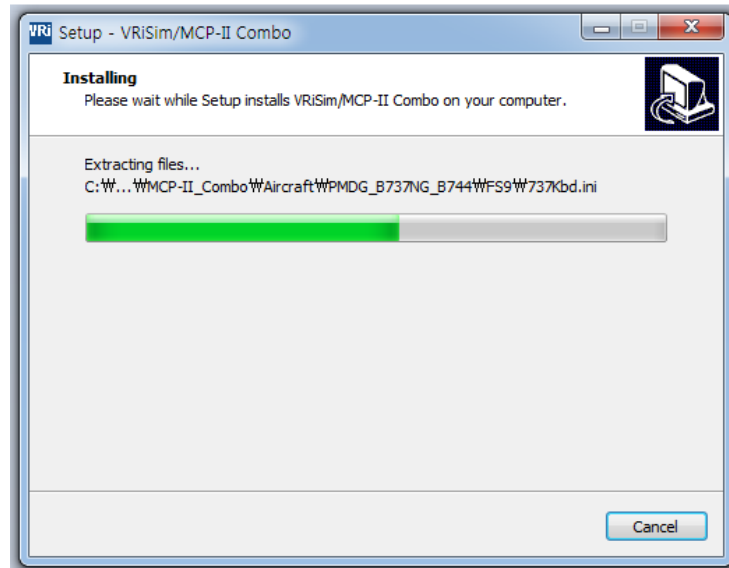
Step 5. Ready to Install

Now ready to install MCP-II_Combo module. Review installation setting and press "Install" button.



Step 6. Installing

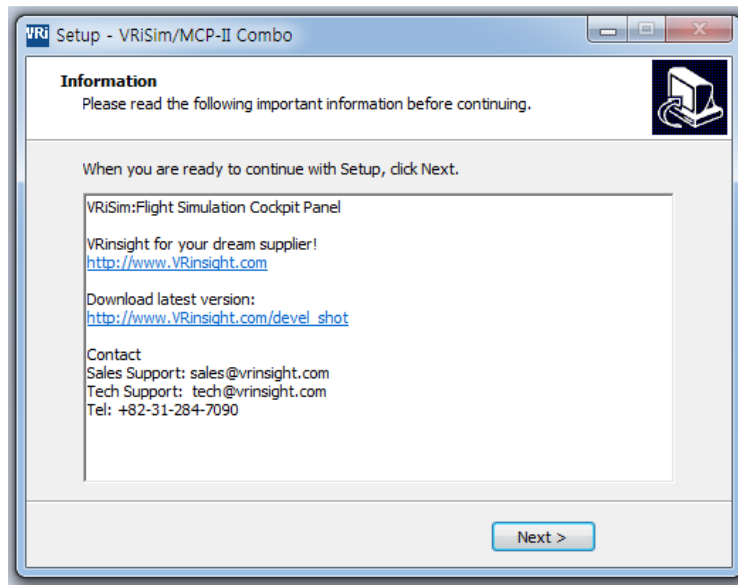
Files are extracted and copied into destination folder during installing step. Animated bar-graph is showing installing process.



VRinsight MCP Combo II - Boeing MCP -

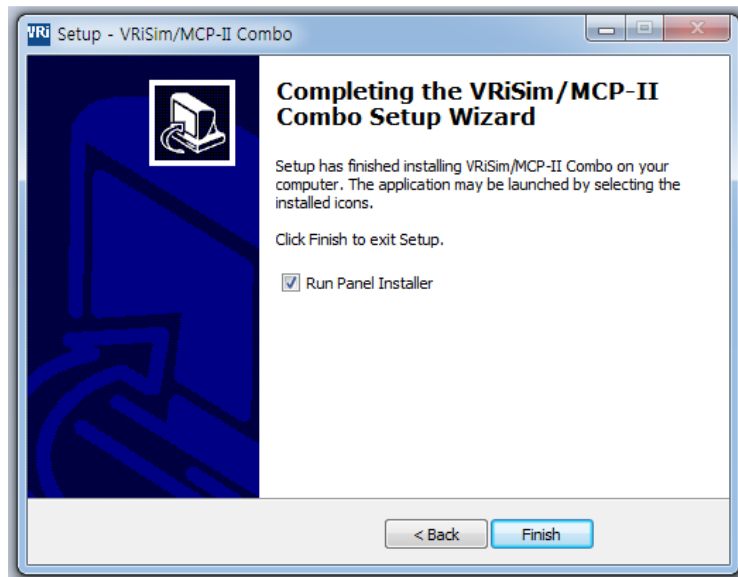
Step 7. Information

Read this information of sales and tech-support e-mail address, VRinsight's web-site. Press "Next" button.



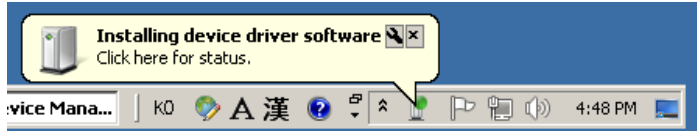
Step 8. Complete MCP-II Combo module setup

MCP-II Combo module setup is done. Optionally, run "Panel Installer" to configure the aircraft.

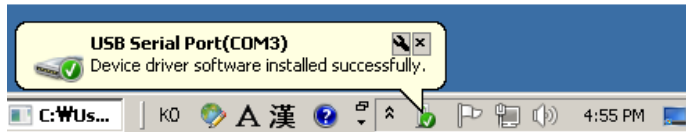


4. Connecting VRInsight's Flight Panel/Re-install driver software

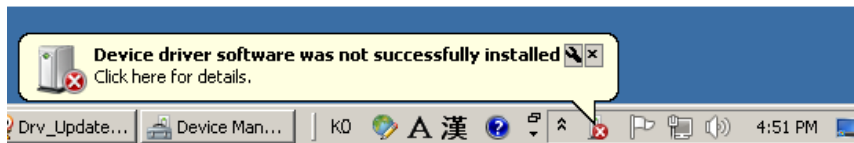
Plug MCP Combo II – Boeing MCP - USB connector into PC's USB port. As new device is connected to PC, it'll try to install device driver software.



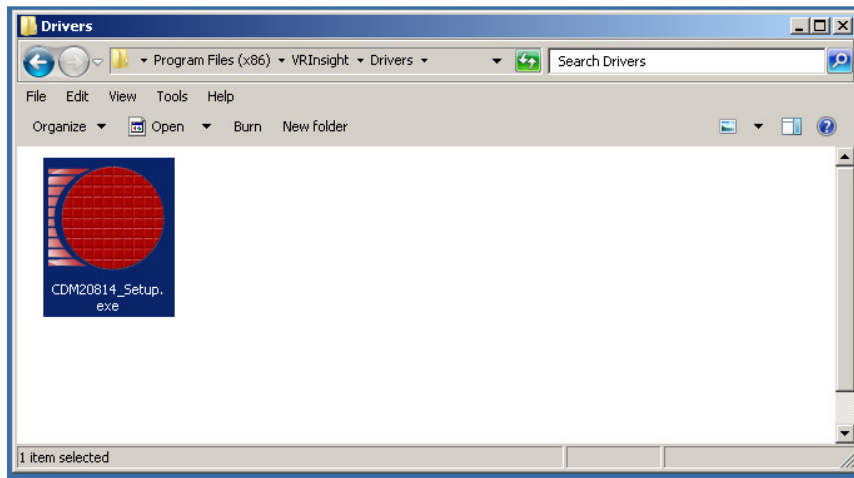
Already the driver software was installed during **VRiSim** software installation, the new device is recognized as "USB Serial Port(COMx)". Following picture is an example of success message for the new VRinsight's flight panel hardware that is recognized as COM3.



When it fail to install driver software, re-install driver software.

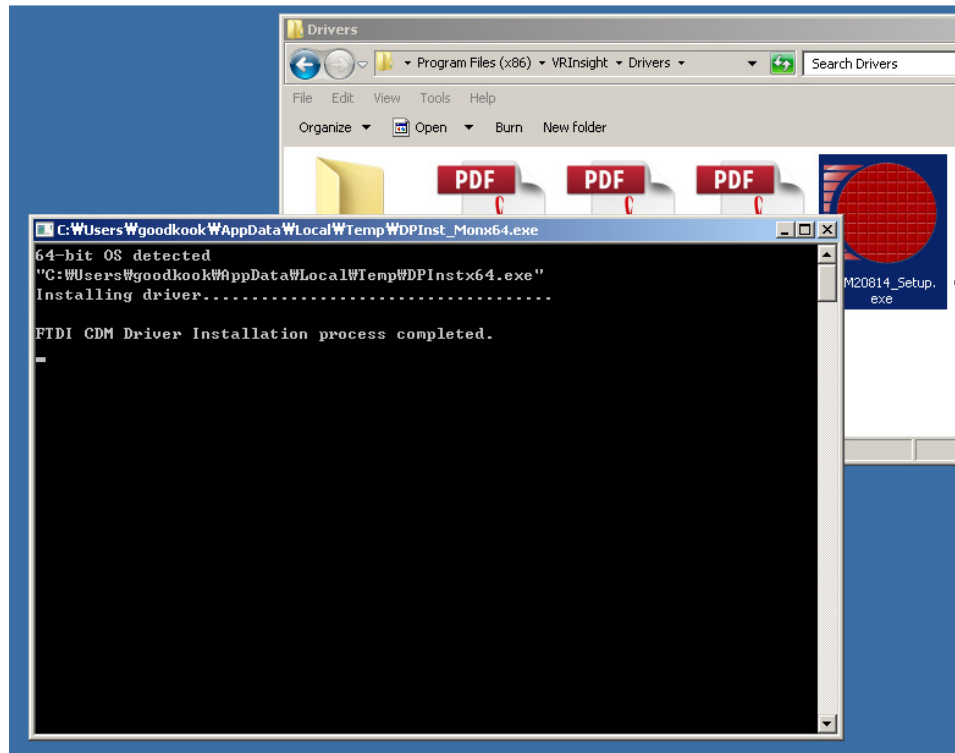


USB-Serial port driver software can be re-installed separately to the **VRiSim** software installation. Driver installer can be found where the **VRiSim** is installed (i.e. C:\Program Files (x86)\VRInsight\Drivers). It is "CDM20XXX_Setup.exe" named with software version.

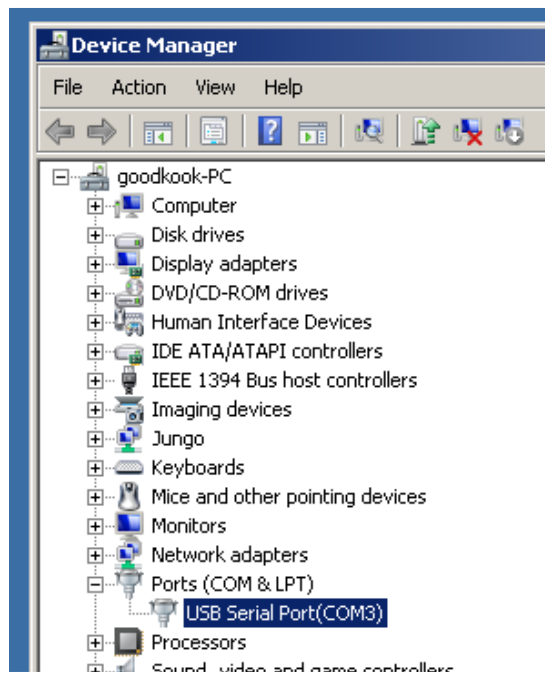


Re-installation of USB-Serial driver is simply to run this installer. Disconnect all VRInsight's flight panel from the PC before running the driver software installer. Temporarily a window is prompted showing "Installing driver....." and ended with completion message. This prompted window will be closed as its completion.

VRinsight MCP Combo II - Boeing MCP -



As the driver software installation is done, connect VRinsight's panel to PC's USB port. The VRi panel will be recognized successfully as Serial Port(COMx). Serial port's COM number would be varied to the PC's hardware configurations. Recognized serial port and its COM number for the panel can be confirmed via "Device Manager".



When it's listed as unknown device or exclamation mark on the USB serial port device, re-install the driver software.

5.Run VRiSim Software

VRiSim is managing software for VRinsight's Flight panel application. It interfaces between flight panel hardware and Microsoft's Flight Simulator.

Run **VRiSim** by double-clicking the icon on desk-top.



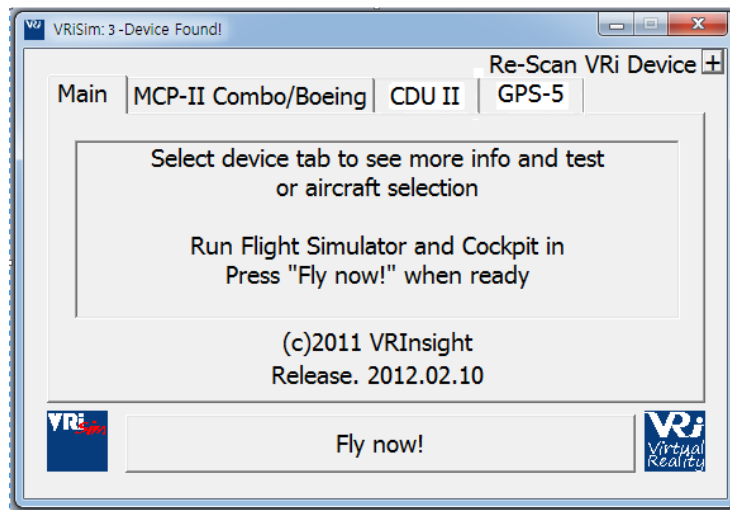
Multiple VRi's flight panel hardware can be managed with single **VRiSim** instance. When **VRiSim** is launched for the first time, it tries to find all VRinsight's devices connected. Searching procedure could take several minutes.

Searching VRi Devices

Following message would be displayed as any device is found and connected successfully,

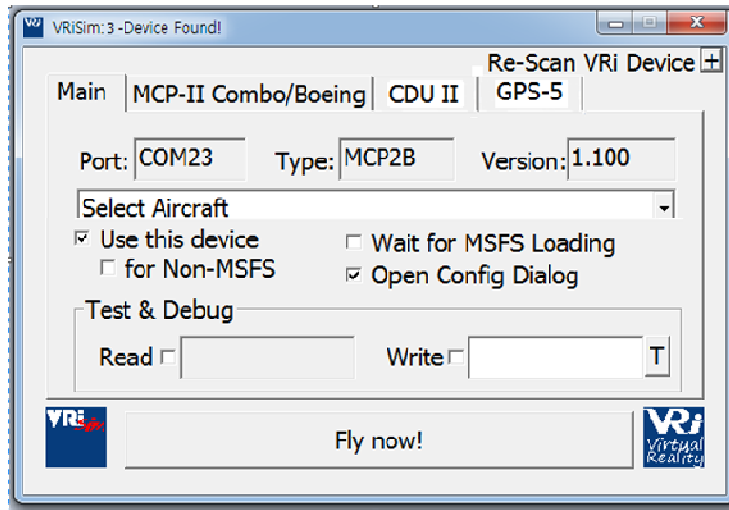
VRi Device Found:MCP-II Combo/Boeing

Following picture is showing 3 devices, MCP Combo II – Boeing MCP -, GPS-5 and CDU-II, are found and connected to **VRiSim**. Each device is listed as separated tab.

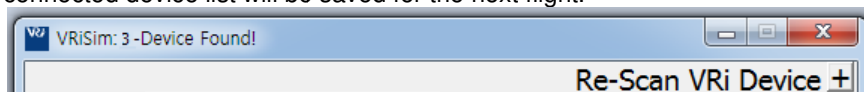


VRinsight MCP Combo II - Boeing MCP -

By clicking device tab, VRi Flight Panel's connected information can be checked.



When any of devices that is already connected to PC's USB port and is not listed with device tab, try re-scan VRi device. This re-scan procedure would take several minutes. Found and connected device list will be saved for the next flight.



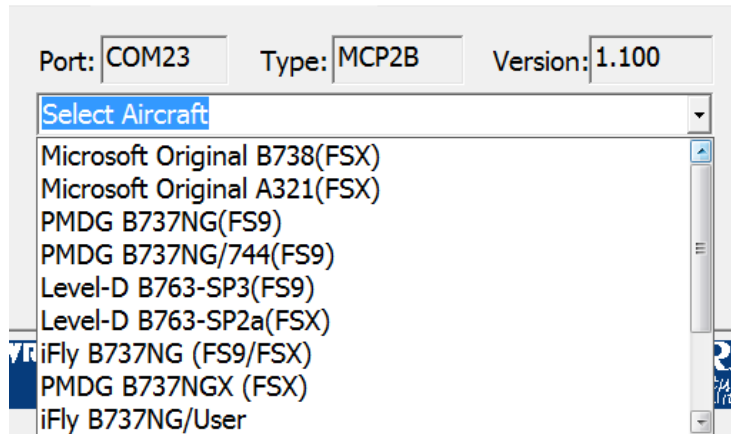
The base-package installer has only **VRiSim**. If additional device specific module is NOT installed, aircraft selection box will be blanked as showing message "NO AIRCRAFT LISTED".



Additionally device specific module should be installed. Then, supported aircrafts are listed in the aircraft selection box. Device specific module installer is supplied with DVD or can be downloaded at the VRinsight's web-page.

Drop down aircraft selection box to select an aircraft to fly with a flight panel listed.

VRinsight MCP Combo II - Boeing MCP -

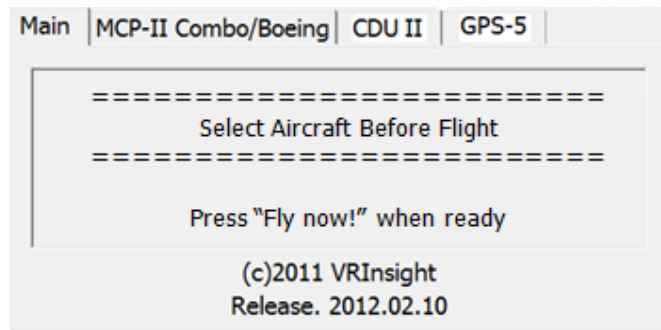


Port: COM23 Type: MCP2B Version: 1.100

Select Aircraft

- Microsoft Original B738(FSX)
- Microsoft Original A321(FSX)
- PMDG B737NG(FS9)
- PMDG B737NG/744(FS9)
- Level-D B763-SP3(FS9)
- Level-D B763-SP2a(FSX)
- VRiFly B737NG (FS9/FSX)
- PMDG B737NGX (FSX)
- iFly B737NG/User

Aircraft must be selected in the each device tab. Then, press “Fly now!” button. When aircraft is NOT selected for the device, following message is displayed in the Main tab. Once aircraft is selected, selection is saved for the next flight.



Main | MCP-II Combo/Boeing | CDU II | GPS-5

=====

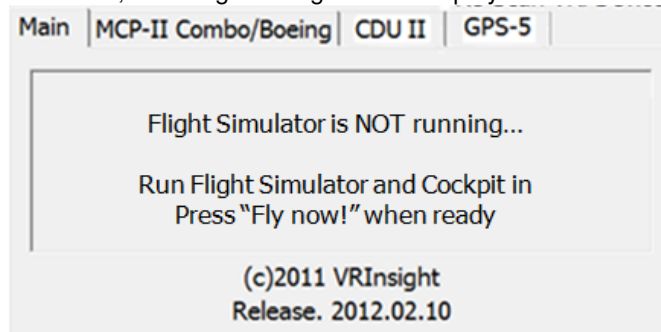
Select Aircraft Before Flight

=====

Press “Fly now!” when ready

(c)2011 VRInsight
Release. 2012.02.10

Microsoft’s Flight Simulator must be running before pressing **VRiSim**’s “Fly Now!” button. Otherwise, following message will be displayed in the Main tab.



Main | MCP-II Combo/Boeing | CDU II | GPS-5

Flight Simulator is NOT running...

Run Flight Simulator and Cockpit in
Press “Fly now!” when ready

(c)2011 VRInsight
Release. 2012.02.10

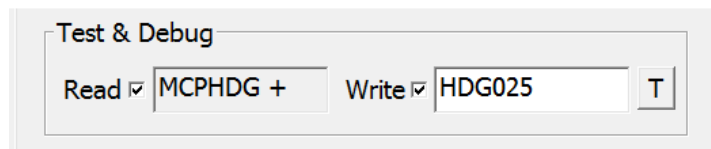
To exclude a device to fly with the aircraft, un-check the box titled “Use this device” in the device tab. This box is un-checked if device specific module software is not installed and no aircrafts are listed.

☒ Use this device

VRinsight

MCP Combo II - Boeing MCP -

By checking and/or un-checking the boxes in the "Test & Debug", commands and messages between **VRiSim** software and the panel hardware are monitored as debugging purpose. To do this, fly a configured aircraft by the **Panel Installer** in "Flight Simulator 2004" / "Microsoft Flight Simulator X" and run **VRiSim**.



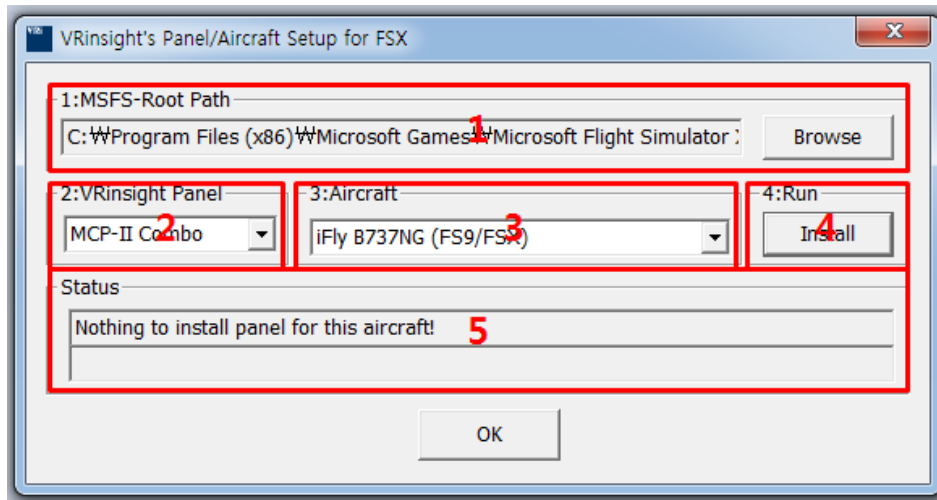
Test & Debug	
Read <input checked="" type="checkbox"/>	MCPHDG +
Write <input checked="" type="checkbox"/>	HDG025
<input type="button" value="T"/>	

Panel Installer

1. What is “Panel Installer”

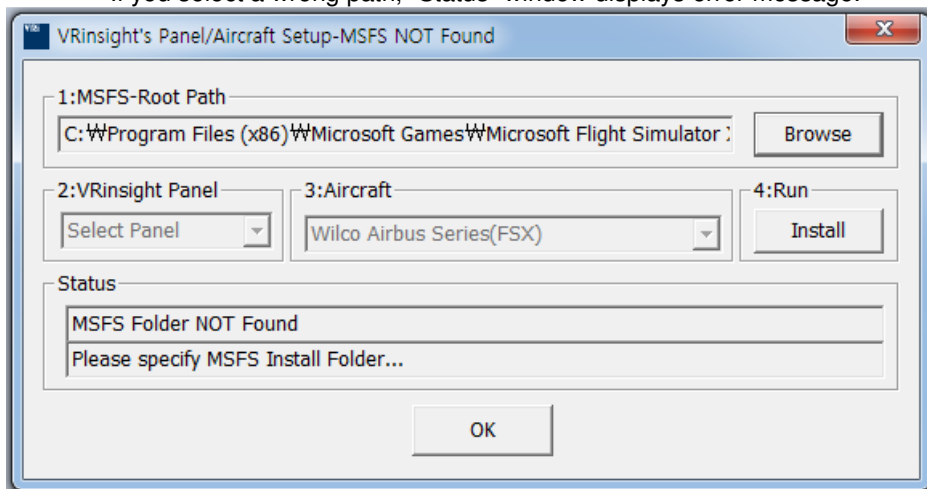
To make VRi's flight panel work with MSFS aircrafts, aircraft's panel configuration file, *panel.cfg*, and related initialization file, **.ini*, need to be modified. When this process is not done properly, MCP Combo II Boeing version will not work. “**Panel Installer**” does this modification properly.

With **Panel Installer**, when you select proper path, product, aircraft, this process will be a piece of cake.

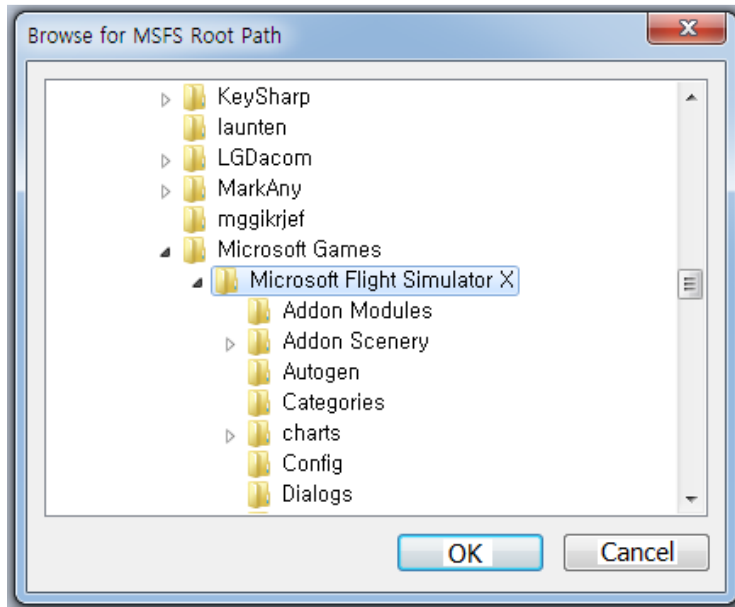


1. **MSFS-Root Path:** Browse the path where “Flight Simulator 2004” or “Microsoft Flight Simulator X” is installed.

- If “Flight Simulator 2004” or “Microsoft Flight Simulator X” is installed other “Drive” or “Directory”, find the path and click “OK”.
- If you select a wrong path, “Status” window displays error message.



NOTE : *Even if the default **MSFS-Root Path** of the **Panel Installer** shows the same folder as yours, press **Browse** and press "OK"*



2. **VRinsight panel:** Select MCP-II Combo.
3. **Aircraft:** Select your aircraft.
4. **Run:** Copy & paste all necessary panel data to work MCP Combo II - Boeing MCP - automatically.
5. **Status:** Inform current status.

2. How to start "Panel Installer"

Run "**Panel Installer**" that can be found in the program group "VRInsight".

- A. Go to Windows "**Start**"
- B. Find program group "**VRinsight**"
- C. Click "**Panel Installer**"

IMPORTANT NOTE: "Run As Administrator"

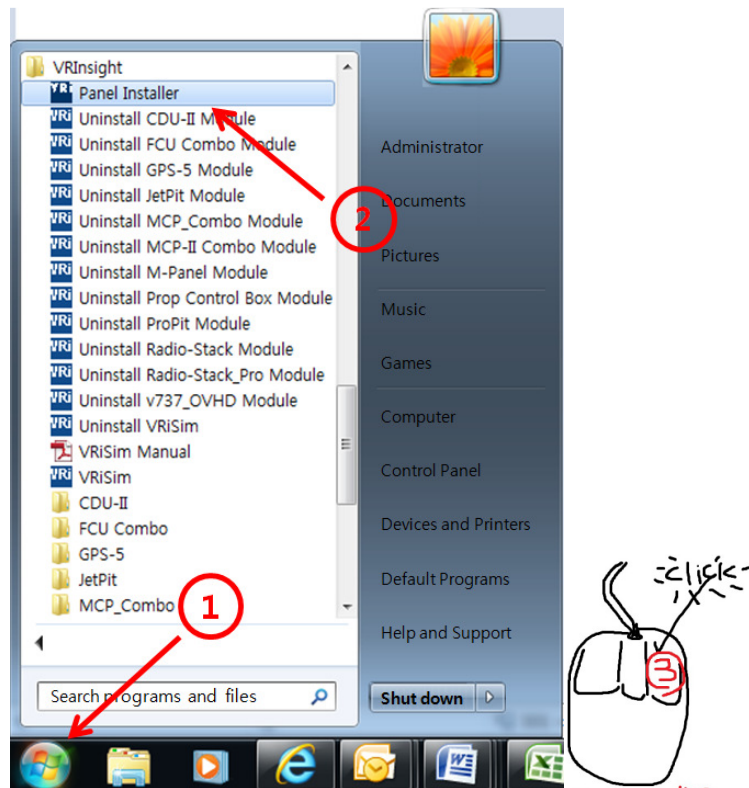
Windows 7 and Vista has more intensive security policy for system safety from accidental corruption of system files. A user can't access system folder (i.e. "Program Files", "Windows") for reading and writing, even if he/she has administrator's privilege. To access these folders, he/she must be "Administrator".

"**Panel Installer**" or "**VRiSim**" try to access system folder to know where FSX/FS 2004 is installed. But it could be blocked if it's not "Run As Administrator". So, please do as following procedure to run software,

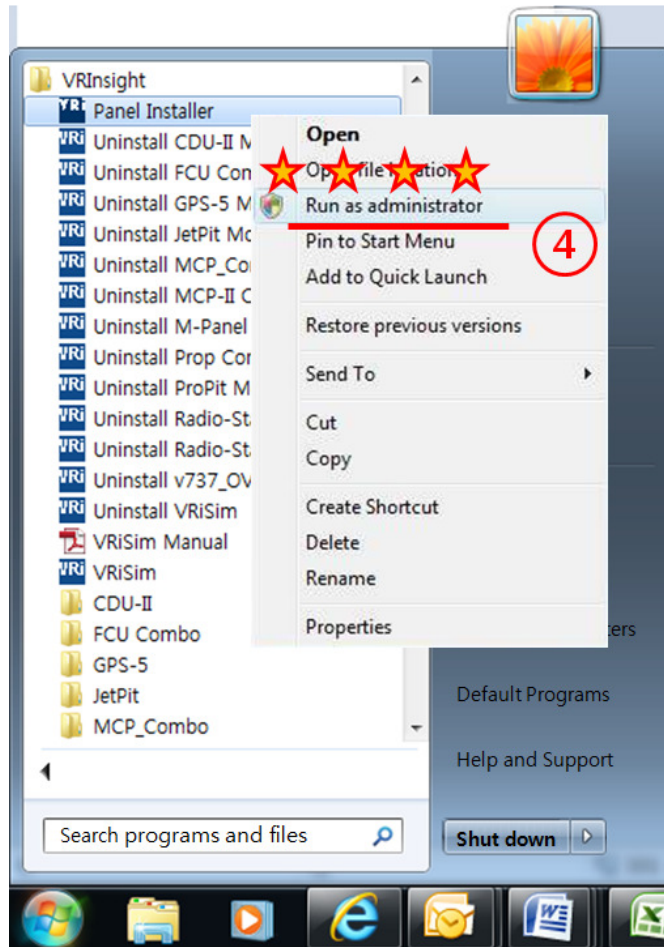
- (1) Go to "**Start**" and find program group "**VRInsight**"
- (2) Place mouse pointer upon "**Panel Installer**"

VRinsight MCP Combo II - Boeing MCP -

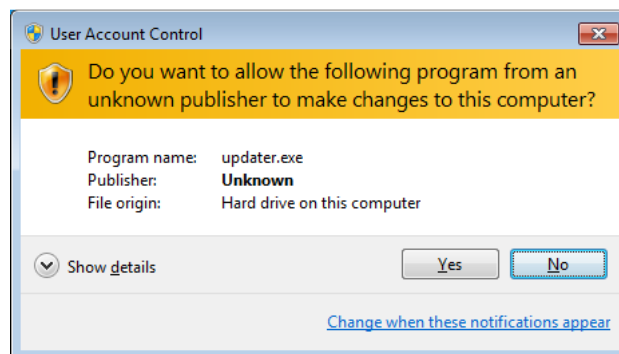
- (3) Click right mouse button
- (4) Click "Run As Administrator"



VRinsight MCP Combo II - Boeing MCP -



You'll see a UAC message if you try to "run as administrator". Press "Yes" to allow the software running.



Want to know more about UAC (User Account Control)?
http://en.wikipedia.org/wiki/User_Account_Control

PMDG 737NGX

To use PMDG 737NGX with MCP Combo II – Boeing MCP -, carefully read below **SDK Document** by PMDG.

ENABLING DATA OUTPUT

The PMDG 737NGX is already set up to listen for control events that may originate from an external application. However, since providing state data to third party applications does consume a small amount of processor attention, **we have disabled this communication output by default** since the vast majority of our users will not be using SDK driven applications.

To enable the data communication output, you will need to open the file **737NGX_Options.ini** that is located in the folder <FSX ROOT>\PMDG\PMDG 737 NGX

Once this folder is open, add the following two lines to the bottom of the file:

```
[SDK]  
EnableDataBroadcast=1
```

When you release your product to customers, it will be necessary for your application installation to set this parameter on the customer's installation, else they will not see data connectivity between your application and the PMDG 737NGX.

NOTE : *Before installation, carefully read “PMDG SDK EULA” & “ENABLING DATA OUTPUT” and follow all instructions of PMDG.*

You can download them at http://www.vrinsight.com/devel_shot/

Thank you for the SDK of PMDG 737 NGX!!!

X-Plane (v9 / 32bit only & v10 32 bit / 64 bit)

To use your MCP Combo II – Boeing MCP - with X-Plane v9 /v10, you need to follow the below instruction

1. Visit the below web-site and download XPUIPC which supports X-Plane v9 (32 bit only) & for X-Plane v10 (32 bit & 63 bit)

<http://www.tosi-online.de/XPUIPC/XPUIPC.html>

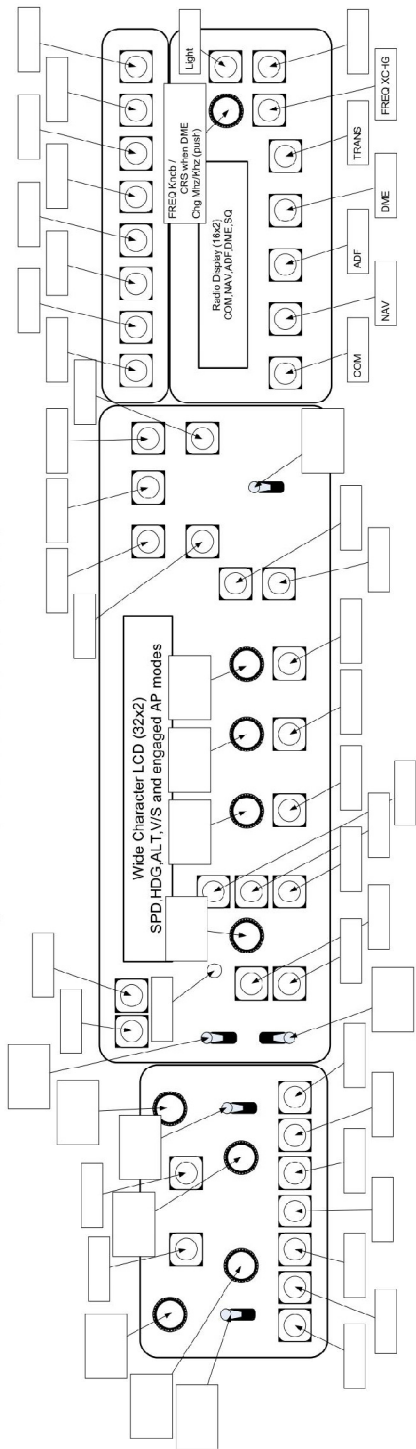
2. Follow the instruction included in readme.txt file in order to install XPUIPC to X-Plane.

3. Run X-Plane

4. Run VRiSim. Go to the MCP-II Combo/Boeing tab and select "X-Plane Original Aircraft (XPUIPC)" in the "Select Aircraft" list.

Control Assignment

MCP Combo II
Boeing-Style Autopilot Mode Control Panel
Layout for _____



Supported Aircraft Lists

Aircrafts	FS Version	Interface Methode
MSFS Original (ALL*)	FSX/FS9/P3D	Direct/FSUIPC
Wilco Aitibus Evo	FSX/FS9	Direct/FSUIPC
PMDG-B737NGX	FSX	Direct/FSUIPC/SDK
PMDG-B737744	FS9	Key-Mapping*
IFly B737NG	FS9/FSX/P3D	Direct/FSUIPC/SDK
LVL D B763	FS9/FSX	Direct/FSUIPC/SDK

* If The aircraft's interface method is "Key-Mapping", Autopilot status display on the panel could be INVALID (NOT SYNCHRONIZED WITH AIRCRAFT SOFTWARE)
** Supported function(s) could be limited to aircraft's features.

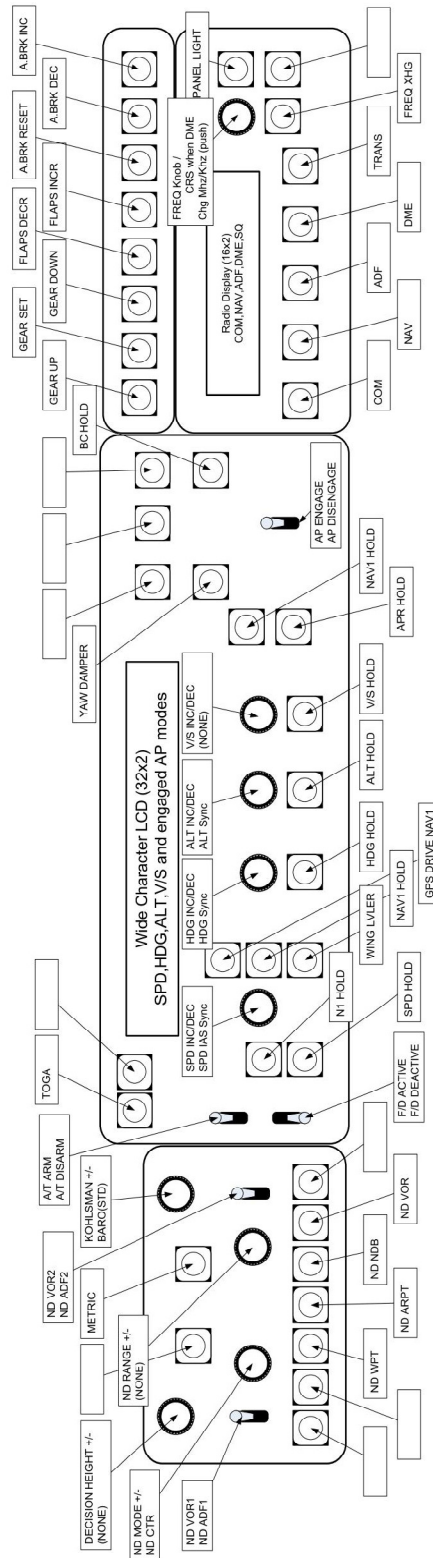
MCP Combo II

Boeing-Style Autopilot Mode Control Panel

Layout for MSFSX Original B737-800(FSX,Direct Interface-FSUIPC)

-OR-

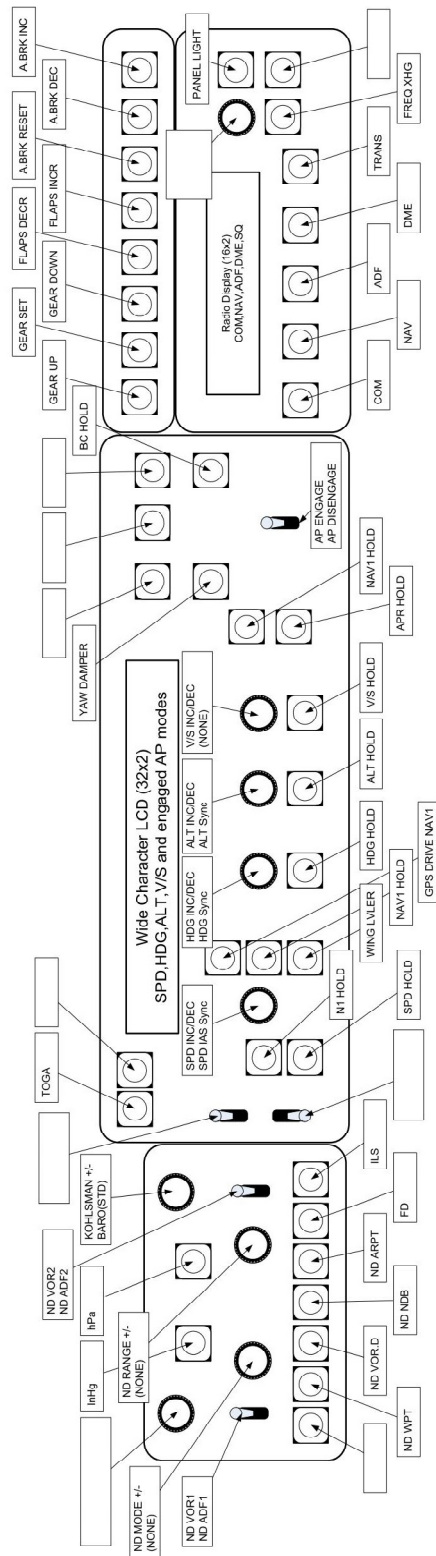
Any other MSFS original aircraft



Boeing-Style Autopilot Mode Control Panel

Layout for MSFSX Original A320 (FSX, Direct Interface-FSUIPC)

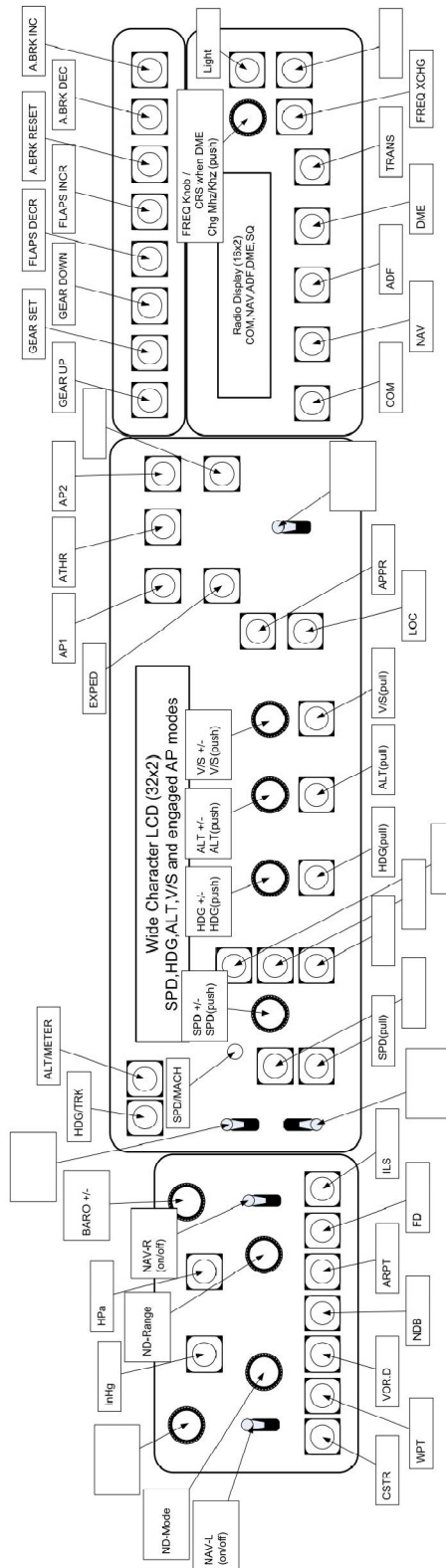
Any other MSFS original aircraft



MCP Combo II

Boeing-Style Autopilot Mode Control Panel

Layout for Wilco Airbus Evolution (FS9/FSX, Direct Interface)

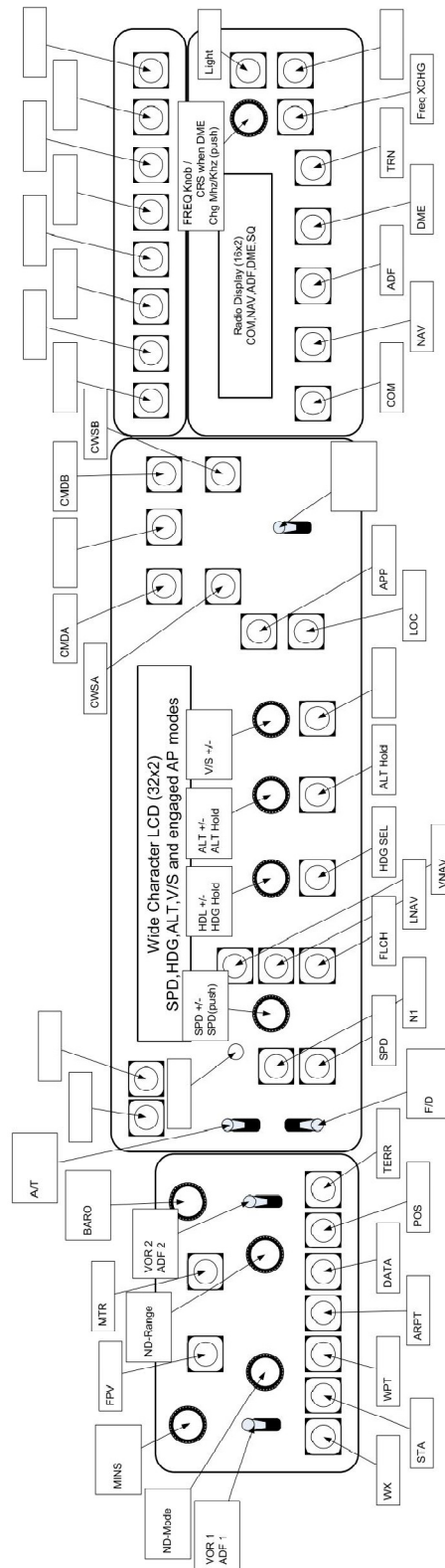


MCP Combo II

Boeing-Style Autopilot Mode Control Panel

Layout for PMDG-737NG/744 (FS9/Key-Command)

**** MCP Display is INVALID for AP status ****

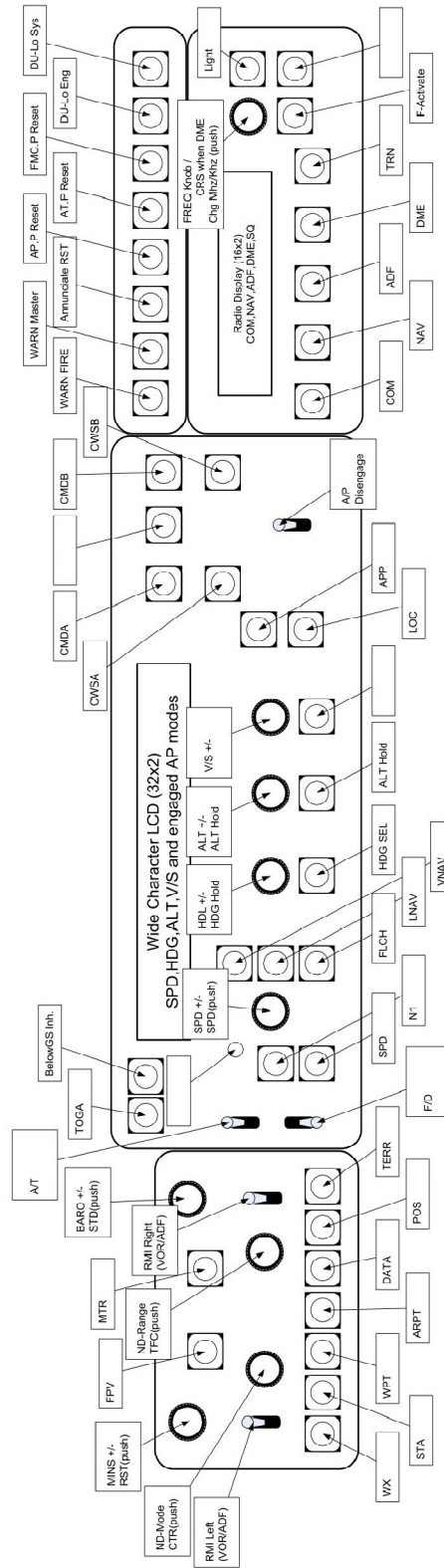


[illegible]

MCP Combo II

Boeing-Style Autopilot Mode Control Panel

Layout for iFly-737NG (FS9/FSX, Direct Interface)



MCP Combo II

Boeing-Style Autopilot Mode Control Panel

Layout for Level-D 767-300ER (FS9/FSX, Direct Interface)

